

Navigation	Reports	PSC Home
------------	---------	----------

KY Public Service Commission

Utility Information

General	Address	Comments	Counties	Groups
<p>Comments for Utility ID: 22251513 Knology of Kentucky, Inc. dba WOW! Internet, Cable and Phone</p> <p>dba "WOW! Internet, Cable and Phone" added per letter dated 3/11/2013. Contact Information updated per 3/14/2013 Info Form. Made inactive per 4/21/2016 notice to withdraw authority to operate.</p> <p style="text-align: right;">Last Changed: 4/21/2016</p>				



INTRASTATE DOMESTIC ACCESS SERVICES

5. SWITCHED ACCESS SERVICES

5.1 General

Switched Access Service, which is available to Customers for their use in furnishing their services to end users, provides a two (2) point communications path between a Customer designated premise and an end user's premise. It provides for the use of common terminating, switching, and transport facilities and for the use of common subscriber plant of the Company. Switched Access Service provides for the ability to originate calls from an end user's premise to a Customer designated premise, and to terminate calls from a Customer designated premise to an end user's premise.

Rates and charges are set forth in Section 17.2. The application of rates for Switched Access Service is described in Section 5.4 following.

The Operator Transfer Service, and 800 Series Data Base Access Service optional features are available with the FGD Switched Access Service.

5.1.1 Description and Provision of Switched Access Service Arrangements

A. Description

1. FGD is provided as trunk side switching through the use of end office or access tandem switch trunk equipment. The switch trunk equipment is provided with wink-start pulsing signals and answer and disconnect supervisory signaling.
2. FGD switching is provided with multi-frequency address signaling or SS7 out of band signaling. Up to twelve (12) digits of the called party number dialed by the Customer's end user using dual-tone multi-frequency or dial-pulse address signals will be provided by company equipment to the Customer's premise where the Switched Access Service terminates. Such address signals will be subject to the ordinary transmission capabilities of the switched transport provided.

Issued: December 27, 2013

Issued by: KNOLOGY of Kentucky, Inc. d/b/a WOW! Internet, Cable and Phone
1241 O.G. Skinner Drive
West Point, Georgia 31833

KENTUCKY PUBLIC SERVICE COMMISSION
JEFF R. DEROUEN EXECUTIVE DIRECTOR
TARIFF BRANCH Effective _____, 2013 <i>Brent Kirtley</i>
12/30/2013 PURSUANT TO 807 KAR 5:011 SECTION 9 (1)

INTRASTATE DOMESTIC ACCESS SERVICES

5. SWITCHED ACCESS SERVICES (Cont'd)

5.1 General (Cont'd)

5.1.1 Description and Provision of Switched Access Service Arrangements (Cont'd)

3. FGD service, when used in the terminating direction, may be used to access valid NXX codes served by the Company's switch and other Customer services (by dialing appropriate codes) when such services can be reached using valid NXX codes. FGD may not be switched, in the terminating direction, to another Trunk side Switched Access Service.
4. The Company will establish a trunk group or groups for the Customer at end office switches or access tandem switches where FGD switching is provided. When required by technical limitations, a separate trunk group will be established for each type of FGD switching arrangement provided. Different types of FGD or other switching arrangements may be combined in a single group at the option of the Company.
5. The access code for FGD switching is a uniform access code of the form 10XXX or 101XXXX. These uniform access codes will be the assigned access numbers of all FGD access provided to the Customer by the Company. No access code is required for calls to a customer over FGD Switched Access Service if the end user's telephone service is arranged for presubscription to that Customer.

Where no access code is required, the number dialed by the Customer's end user shall be a seven (7) or ten (10) digit number for calls in the North American Numbering Plan (NANP). For international calls outside the NANP, a seven (7) to twelve (12) digit number may be dialed.

Issued: December 27, 2013

Issued by: KNOLOGY of Kentucky, Inc. d/b/a WOW! Internet, Cable and Phone
1241 O.G. Skinner Drive
West Point, Georgia 31833

KENTUCKY PUBLIC SERVICE COMMISSION
JEFF R. DEROUEN EXECUTIVE DIRECTOR
TARIFF BRANCH Effective _____, 2013 <i>Brent Kirtley</i>
12/30/2013 PURSUANT TO 807 KAR 5:011 SECTION 9 (1)

INTRASTATE DOMESTIC ACCESS SERVICES

5. SWITCHED ACCESS SERVICES (Cont'd)

5.1 General (Cont'd)

5.1.1 Description and Provision of Switched Access Service Arrangements (Cont'd)

5. (Cont'd)

When the 10XXX or 101XXXX access code is used, FGD Service also provides for dialing the digit 0 or 00 for access to the Customer's operator and 911 for access to emergency reporting service.

A Customer may order 950 on FGD to activate a Customer's designated 950-XXXX access code. This will allow the Company to direct those designated 950-XXXX calls dialed by the Customer's end users to the Customer's access service. The Customer must be prepared to handle normally dialed FGD calls, as well as calls dialed with the designated 950-XXXX access code which requires the Customer to receive additional address signaling. Such calls will be rated as FGD.

6. There are various optional features associated with Local Transport, Common Switching and Transport Termination Services available. Operator Transfer Service (forwarding of 0- calls) may be provided over FGD switched access service trunks from the operator service location to the Customer's premise. Where required by technical limitations, a separate FGD trunk group will be established for Operator Transfer Service. The operator service location will provide trunk answer and disconnect supervisory signaling to the Customer. The Company will provide Operator Transfer Service for calls originating from telephone numbers associated with exchange service lines in end offices subtending the Operator Service location.

B. Manner of Provision

Switched Access Service is provided by the Company as trunk-side switched access with equal access capabilities compatible with industry standards for Feature Group D Service.

Trunks used for Switched Access Service maybe configured for one (1) way (either originating only or terminating only) or for two (2) way directionality. Originating calling permits the delivery of calls from the Telephone Exchange Service locations to the Customer designated premise. Terminating calling permits the delivery of calls from the Customer designated premise to Telephone Exchange Service locations. Two (2) way calling permits the delivery of calls in both directions, but not simultaneously.

Issued: December 27, 2013

Issued by: KNOLOGY of Kentucky, Inc. d/b/a WOW! Internet, Cable and Phone

1241 O.G. Skinner Drive
West Point, Georgia 31833

<p>KENTUCKY PUBLIC SERVICE COMMISSION</p>
<p>JEFF R. DEROUEN EXECUTIVE DIRECTOR</p>
<p>TARIFF BRANCH</p> <p>Effective _____, 2013</p> <p><i>Brent Kirtley</i></p>
<p>12/30/2013 PURSUANT TO 807 KAR 5:011 SECTION 9 (1)</p>

INTRASTATE DOMESTIC ACCESS SERVICES

5. SWITCHED ACCESS SERVICES (Cont'd)

5.1 General (Cont'd)

5.1.2 Ordering Options and Conditions

Switched Access Service is ordered under the Access Order provisions set forth in Section 3. Also, included in that Section are regulations concerning Miscellaneous Service Order Charges which may be associated with Switched Access Service ordering (e.g. Service Date Change, Cancellation, etc.).

5.1.3 Rate Categories

There are three (3) rate categories which apply to Switched Access Service:

- Local Transport
- End Office
- Chargeable Optional Features

Following is a description of the rate categories for the facilities required to provide Switched Access Services to the Customer.

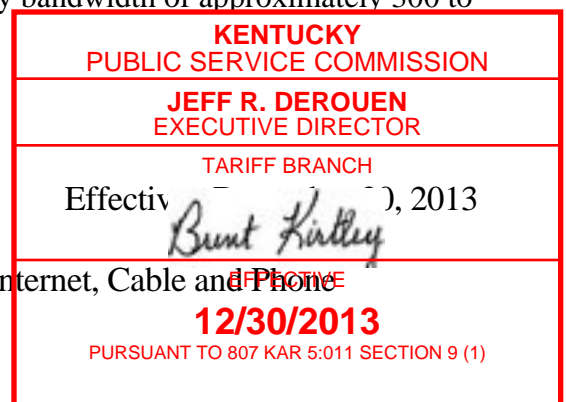
A. Local Transport

The Local Transport rate category establishes the charges related to the transmission and tandem switching facilities between the Customer designated premise and the Company's local switching equipment, where the Customer's traffic is switched to originate or terminate the Customer's communications. Mileage measurements are set forth in Section 5.4.3 following and in this Section.

Local transport is a two (2) way voice frequency transmission path composed of facilities determined by the Company. The two (2) way voice frequency transmission path permits the transport of calls in the originating direction (from the end user end office switch to the Customer designated premise) and in the terminating direction (from the Customer designated premise to the end office switch), but not simultaneously. The voice frequency transmission path may be comprised of any form or configuration of plant capable of and typically used in the telecommunications industry for the transmission of voice and associated telephone signals within the frequency bandwidth of approximately 300 to 3000 Hz.

Issued: December 27, 2013

Issued by: KNOLOGY of Kentucky, Inc. d/b/a WOW! Internet, Cable and Phone
1241 O.G. Skinner Drive
West Point, Georgia 31833



INTRASTATE DOMESTIC ACCESS SERVICES

5. SWITCHED ACCESS SERVICES (Cont'd)

5.1 General (Cont'd)

5.1.3 Rate Categories (Cont'd)

A. Local Transport (Cont'd)

Transport can be ordered as switched transport or direct trunked transport by the Customer. The switched transport provides a common transmission path between Customers and the Company's local switch that serves end users. Direct trunked transport provides dedicated transmission paths to a Customer for connection to Switched Access Services of the Company.

The Customer must specify when ordering whether the service is to be provided as direct trunked transport or tandem switched transport. Additionally the Customer must specify (1) whether the service is to be directly routed to an end office switch or through an access tandem switch, and (2) the type of direct trunked transport and whether it will overflow to tandem switched transport when service is directly routed to an end office, (3) the type of entrance facility, (4) the directionality of the service, and (5) when multiplexing is required, the hub(s) at which the multiplexing will be provided.

Additionally, when service is to be routed through an access tandem switch, the Customer must specify whether the facility between the serving wire center and the tandem is to be provided as direct trunked transport or tandem switched transport.

When the Customer has both tandem switched transport and direct trunked transport at the same end office, the Customer will be provided Alternate Traffic Routing.

Direct trunked transport is available at all tandems and at the end offices with the capability of providing the service. Direct trunked transport is not available from end offices that lack recording or measurement capability.

Issued: December 27, 2013

Issued by: KNOLOGY of Kentucky, Inc. d/b/a WOW! Internet, Cable and Phone
1241 O.G. Skinner Drive
West Point, Georgia 31833

KENTUCKY PUBLIC SERVICE COMMISSION
JEFF R. DEROUEN EXECUTIVE DIRECTOR
TARIFF BRANCH Effective _____, 2013 <i>Brent Kirtley</i>
12/30/2013 PURSUANT TO 807 KAR 5:011 SECTION 9 (1)

INTRASTATE DOMESTIC ACCESS SERVICES

5. SWITCHED ACCESS SERVICES (Cont'd)

5.1 General (Cont'd)

5.1.3 Rate Categories (Cont'd)

A. Local Transport (Cont'd)

Normally, direct trunked transport of originating 800 series type calls from an end office is available only from Service Switching Point (SSP) equipped end offices. However, certain non-SSP equipped end offices can accommodate direct trunking of originating 800 series type calls. The direct trunking of originating 800 service type calls will be available if the end office can accommodate the service.

Local Transport is provided at the rates and charges set forth in Sections 17. The application of these rates is as set forth in Section 5.4.1 C. following .

The Local Transport Rate Category includes five (5) classes of rate elements: 1) Entrance Facility, 2) Transport Interconnection Charge, 3) Multiplexing, 4) Direct Trunked Transport or 5) Tandem Switched Transport.

When more than one Company is involved in providing the Switched Access Service to a Customer, for the provision of transport, each Company will provide it's portion of transport to the interconnection point with the next Company. The mileage used to calculate charges for the Company's transport interconnections is as set forth in Section 5.4.3 following.

1. Entrance Facility

The Entrance Facility Charge recovers a portion of the costs associated with a communications path between a Customer designated premise and the serving wire center of that premise. Included as part of the entrance facility is a standard channel interface arrangement which defines the technical characteristics associated with the type of facilities to which the access service is to be connected at the Customer designated premise and the type of signaling capability, if any.

Issued: December 27, 2013

Issued by: KNOLOGY of Kentucky, Inc. d/b/a WOW! Internet, Cable and Phone
1241 O.G. Skinner Drive
West Point, Georgia 31833

KENTUCKY PUBLIC SERVICE COMMISSION
JEFF R. DEROUEN EXECUTIVE DIRECTOR
TARIFF BRANCH Effective _____, 2013 <i>Brent Kirtley</i>
12/30/2013 PURSUANT TO 807 KAR 5:011 SECTION 9 (1)

INTRASTATE DOMESTIC ACCESS SERVICES

5. SWITCHED ACCESS SERVICES (Cont'd)

5.1 General (Cont'd)

5.1.3 Rate Categories (Cont'd)

A. Local Transport (Cont'd)

1. Entrance Facility (Cont'd)

Three (3) types of entrance facilities are available: 1) voice grade two (2) or four (4) wire (an analog channel with an approximate bandwidth of 300 to 3000 HZ), 2) high capacity DS1 (an isochronous serial digital channel with a rate of 1.544 Mbps) and 3) high capacity DS3 (and isochronous serial digital channel with a rate of 44.736 Mbps). The minimum period for which a DS3 entrance facility is provided is twelve (12) months.

One (1) charge applies for each entrance facility that is terminated at a Customer designated premise. This charge specified in Section 17 will apply even if the Customer designated premise and the serving wire center are collocated in the Company building.

A Customer's local transport may be connected to the entrance facility of another Customer, providing the other Customer submits a letter of authorization for this connection and assumes full responsibility for the cost of the entrance facility.

Issued: December 27, 2013

Issued by: KNOLOGY of Kentucky, Inc. d/b/a WOW! Internet, Cable and Phone
1241 O.G. Skinner Drive
West Point, Georgia 31833

KENTUCKY PUBLIC SERVICE COMMISSION
JEFF R. DEROUEN EXECUTIVE DIRECTOR
TARIFF BRANCH Effective _____, 2013 <i>Brent Kirtley</i>
12/30/2013 PURSUANT TO 807 KAR 5:011 SECTION 9 (1)

INTRASTATE DOMESTIC ACCESS SERVICES

5. SWITCHED ACCESS SERVICES (Cont'd)

5.1 General (Cont'd)

5.1.3 Rate Categories (Cont'd)

A. Local Transport (Cont'd)

2. Transport Interconnection Charge

The Transport Interconnection Charge recovers the costs associated with local transport that are not recovered by the Entrance Facility, Direct Trunked Transport, Tandem Switched Transport, Multiplexing, or Dedicated Signaling (i.e., SS7) Charges. The Transport Interconnection Charge specified applies to both tandem switched and direct trunked access minutes of use.

3. Multiplexing

DS3 to DS1 Multiplexing Charges apply when a high capacity DS3 entrance facility or high capacity DS3 direct trunked facility is connected with high capacity DS1 direct trunked transport. The DS3 to DS1 multiplexer will convert a 44.736 Mbps channel to twenty-eight (28) DS1 channels using digital time division multiplexing. DS1 to voice grade Multiplexing Charges apply when a high capacity DS1 entrance facility or high capacity DS1 direct trunked facility is connected with voice grade direct trunked transport. However, a DS1 to voice grade Multiplexing Charge does not apply when a high capacity DS1 entrance facility or high capacity DS1 direct trunked transport is terminated at an electronic end office and only Switched Access Service is provided over the DS1 facility (i.e., voice grade special access channels are not derived). The DS1 to voice grade multiplexer will convert a 1.544 Mbps channel to twenty-four (24) voice grade channels. Multiplexing will be provided in the offices where the capability exist.

4. Direct Trunked Transport

The Company provides direct trunked transport, between the Customer's designated premise and the local switching equipment of the Company. This transmission path is dedicated to the use of a single Customer. Voice grade two (2) or four (4) wire or high capacity DS1 and DS3 facilities are available for direct trunked transport.

Issued: December 27, 2013

Issued by: KNOLOGY of Kentucky, Inc. d/b/a WOW! Internet, Cable and Phone

1241 O.G. Skinner Drive
West Point, Georgia 31833

JEFF R. DEROUEN
EXECUTIVE DIRECTOR

TARIFF BRANCH
Effective _____, 2013

Brent Kirtley
12/30/2013
PURSUANT TO 807 KAR 5:011 SECTION 9 (1)

INTRASTATE DOMESTIC ACCESS SERVICES

5. SWITCHED ACCESS SERVICES (Cont'd)

5.1 General (Cont'd)

5.1.3 Rate Categories (Cont'd)

A. Local Transport (Cont'd)

4. Direct Trunked Transport (Cont'd)

The Customer must specify the choice of facilities (i.e., voice grade two (2) or (4) four wire or high capacity DS1 or DS3) to be used in the provision of the direct trunked transport or entrance facility and whether it will overflow to tandem switched transport. The minimum period for which a high capacity DS3 direct trunked transport is provided is twelve (12) months.

Direct trunked transport is available to all tandems and to all end offices with the capability.

Direct trunked transport is not available from end offices that lack recording or measurement capability.

Normally, direct trunked transport of originating 800 series type calls from an end office is available only from Service Switching Point (SSP) equipped end offices. However, certain non-SSP equipped end offices can accommodate direct trunking of originating 800 series type calls.

High capacity DS3 direct trunked transport can not be terminated at end offices that are not identified as hub offices that provide DS3 to DS1 multiplexing. Additionally, DS1 direct trunked transport can not be terminated at end offices that are not identified as hub offices that provide DS1 to voice grade multiplexing or are not electronic end offices.

Issued: December 27, 2013

Issued by: KNOLOGY of Kentucky, Inc. d/b/a WOW! Internet, Cable and Phone
1241 O.G. Skinner Drive
West Point, Georgia 31833

KENTUCKY PUBLIC SERVICE COMMISSION
JEFF R. DEROUEN EXECUTIVE DIRECTOR
TARIFF BRANCH Effective _____, 2013 <i>Brent Kirtley</i>
12/30/2013 PURSUANT TO 807 KAR 5:011 SECTION 9 (1)

INTRASTATE DOMESTIC ACCESS SERVICES

5. SWITCHED ACCESS SERVICES (Cont'd)

5.1 General (Cont'd)

5.1.3 Rate Categories (Cont'd)

A. Local Transport (Cont'd)

4. Direct Trunked Transport (Cont'd)

Direct Trunked Transport rates consist of a Direct Trunked Facility rate which is applied on a per mile basis and a Direct Trunked Termination rate which is applied at each end of each measured segment of the direct trunked facility (e.g., at the end office, hub, tandem, and serving wire center). When the direct trunked facility mileage is zero (0), neither the Direct Trunked Facility rate nor the Direct Trunked Termination rate will apply.

The Direct Trunked Transport rate elements recover a portion of the cost associated with the communications path between a serving wire center and an end office or serving wire center and a tandem on circuits dedicated to the use of a single Customer:

The Direct Trunked Facility rate recovers a portion of the costs of transmission facilities, including intermediate transmission circuit equipment, between the end points of the interoffice circuits.

The Direct Trunked Termination rate recovers a portion of the costs of the circuit equipment that is necessary for the termination of each end of the direct trunked facility.

5. Switched Transport Services

Switched transport is provided from the serving wire center at which the service becomes common transport to either of the following, at the discretion of the Customer:

- a. The last serving wire center of the common transport
- b. The serving wire center of the end user

The Tandem Switched Transport rate elements recover a portion of the costs associated with the communications path between the serving wire center and an end office or serving wire center and an end office on circuits that are switched at a tandem switch.

Issued: December 27, 2013

Issued by: KNOLOGY of Kentucky, Inc. d/b/a WOW! Internet, Cable and Phone

1241 O.G. Skinner Drive
West Point, Georgia 31833

KENTUCKY PUBLIC SERVICE COMMISSION
JEFF R. DEROUEN EXECUTIVE DIRECTOR
TARIFF BRANCH Effective _____, 2013 <i>Brent Kirtley</i>
12/30/2013 PURSUANT TO 807 KAR 5:011 SECTION 9 (1)

INTRASTATE DOMESTIC ACCESS SERVICES

5. SWITCHED ACCESS SERVICES (Cont'd)

5.1 General (Cont'd)

5.1.3 Rate Categories (Cont'd)

A. Local Transport (Cont'd)

5. Switched Transport Services (Cont'd)

In those instances where an SSP equipped end office is capable of handling 800 SAC traffic on a direct trunked basis but incapable of handling 888 SAC traffic on a direct trunked basis, a full credit will be provided for Tandem Switched Transport Charges associated with FGD service for 888 SAC traffic delivered at the tandem. This results in all 800 series traffic being rated as direct trunked transport regardless of whether the SSP equipped end office is capable of handling 888 SAC traffic on a direct trunked basis.

Tandem Switched Transport rates consist of a Tandem Switching rate, a Tandem Switched Facility rate and a Tandem Switched Termination rate.

(a) The Tandem Switching rate recovers a portion of the costs of switching traffic through an access tandem. The Tandem Switching rate is applied on a per access minute per tandem basis for all originating and all terminating minutes of use switched at the tandem.

(b) The Tandem Switched Facility rate recovers a portion of the costs of the transmission facilities, including intermediate transmission circuit equipment, between the end points of the interoffice circuits. The Tandem Switched Facility rate is applied on a per access minute basis for all originating and terminating minutes of use routed over the facility. One (1) mile of transport is charged regardless of actual mileage when calculating the Tandem Switched Facility charge.

(c) The Tandem Switched Termination rate recovers a portion of the costs of the circuit equipment that is necessary for the termination of each end of the tandem switched facility. The Tandem Switched Termination rate is applied on a per access minute basis (for all originating and terminating minutes of use routed over the facility) at each end of each measured segment of tandem switched facility (e.g., at the end office, host office, tandem, and service center).

Issued: December 27, 2013

Issued by: KNOLOGY of Kentucky, Inc. d/b/a WOW! Internet, Cable and Phone

1241 O.G. Skinner Drive
West Point, Georgia 31833

KENTUCKY PUBLIC SERVICE COMMISSION
JEFF R. DEROUEN EXECUTIVE DIRECTOR
TARIFF BRANCH Effective _____, 2013 <i>Brent Kirtley</i>
12/30/2013 PURSUANT TO 807 KAR 5:011 SECTION 9 (1)

INTRASTATE DOMESTIC ACCESS SERVICES

5. SWITCHED ACCESS SERVICES (Cont'd)

5.1 General (Cont'd)

5.1.3 Rate Categories (Cont'd)

A. Local Transport (Cont'd)

6. Interface Groups

The Company will provide interface groups for terminating the entrance facility at the Customer's designated premise. The Company will attempt to meet any standard interface group protocol, limited by the technical availability.

B. End Office

The End Office rate category establishes the charges related to the local end office switching and end user termination functions necessary to complete the transmission of switched access communications to and from the end users served by the local end office. The End Office rate category includes the Local Switching and Information Surcharge rate elements.

1. Local Switching

The Local Switching rate element establishes the charges related to the use of end office switching equipment, the terminations in the end office of end user lines, and the terminations of calls at the Company intercept operators or recordings.

Where end offices are appropriately equipped, international dialing may be provided as a capability which provides local dial switching for Feature Group D. International dialing provides the capability of switching international calls with service prefix and address codes having more digits than are capable of being switched through a standard FGD equipped end office.

2. Information Surcharge

Information Surcharge rates are assessed to a Customer based on the total number of access minutes.

Issued: December 27, 2013

Issued by: KNOLOGY of Kentucky, Inc. d/b/a WOW! Internet, Cable and Phone
1241 O.G. Skinner Drive
West Point, Georgia 31833



INTRASTATE DOMESTIC ACCESS SERVICES

5. SWITCHED ACCESS SERVICES (Cont'd)

5.1 General (Cont'd)

5.1.3 Rate Categories (Cont'd)

C. Chargeable Optional Features

Where facilities permit, the Company will, at the option of the Customer, provide the following chargeable optional features.

1. Operator Transfer Services

Operator Transfer Service may be provided with Feature Group D Switched Access Service at Company designated operator services location. Operator Transfer Service is an originating service. The rate is assessed per zero minus (0-) call transferred to a Customer's operator. A zero minus (0-) call is considered transferred when the Company operator activates the switch transferring the call to the designated Customer and the Customer acknowledges receipt.

In addition to the Operator Transfer Service Charge described above and in Section 5.4.5, Feature Group D Switched Access Service rates and charges as set forth in Section 5.4.1 and Carrier Common Line Charges will apply per minute of use for Operator Transfer Service.

Operator Transfer Service Charges, provided for in this Tariff, are applied only to those calls actually transferred by the Company to the Customer's operator.

2. 800 Series Data Base Access Service

800 Series Data Base Access Service is provided to all Customers in conjunction with FGD Switched Access Service. When a 1+800+NXX-XXXX call is originated by an end user, the Company will utilize the Signaling System 7 (SS7) network to query an 800 series data base to identify the Customer to whom the call will be delivered and provide vertical features based on the dialed ten (10) digits. The call will then be routed to the identified customer over

FGD
switched access.

Issued: December 27, 2013

Issued by: KNOLOGY of Kentucky, Inc. d/b/a WOW! Internet, Cable and Phone
1241 O.G. Skinner Drive
West Point, Georgia 31833

KENTUCKY PUBLIC SERVICE COMMISSION
JEFF R. DEROUEN EXECUTIVE DIRECTOR
TARIFF BRANCH Effective _____, 2013 <i>Brent Kirtley</i>
12/30/2013 PURSUANT TO 807 KAR 5:011 SECTION 9 (1)

INTRASTATE DOMESTIC ACCESS SERVICES

5. SWITCHED ACCESS SERVICES (Cont'd)

5.1 General (Cont'd)

5.1.3 Rate Categories (Cont'd)

2. 800 Series Data Base Access Service (Cont'd)

A Basic or Vertical Feature Query Charge is assessed for each query launched to the data base which identifies the Customer to whom the call will be delivered. The basic query provides the identification of the Customer to whom the call will be delivered and includes area of service routing which allows routing of 800 series type calls by company to different interexchange carriers based on the LATA in which the call originates. The vertical feature query provides the same Customer identification as the basic query and may include, 1) call validation, (ensuring that calls originate from subscribed service areas); 2) POTS translation of 800 series numbers; 3) alternate POTS translation (which allows subscribers to vary the routing of 800 series type calls based on factors such as time of day, place or origination of the call, etc.); and 4) multiple Carrier routing (which allows subscribers to route to different Carriers).

The description and application of this charge is set forth in Section 5.4.1 following.

5.1.4 Special Facilities Routing

Any Customer may request that the facilities used to provide Switched Access Service be specially routed. The regulations for special facilities routing (i.e., Avoidance, Diversity and Cable-Only) are set forth in Section 8 following.

Issued: December 27, 2013

Issued by: KNOLOGY of Kentucky, Inc. d/b/a WOW! Internet, Cable and Phone
1241 O.G. Skinner Drive
West Point, Georgia 31833

KENTUCKY PUBLIC SERVICE COMMISSION
JEFF R. DEROUEN EXECUTIVE DIRECTOR
TARIFF BRANCH Effective _____, 2013 <i>Brent Kirtley</i>
12/30/2013 PURSUANT TO 807 KAR 5:011 SECTION 9 (1)

INTRASTATE DOMESTIC ACCESS SERVICES

5. SWITCHED ACCESS SERVICES (Cont'd)

5.1 General (Cont'd)

5.1.5 Design Layout Report

At the request of the Customer, the Company will provide to the Customer the makeup of the facilities and services provided from the Customer's premise to the first point of switching. This information will be provided in the form of a Design Layout Report. The Design Layout Report will be provided to the Customer at no charge, and will be reissued or updated whenever these facilities are materially changed.

5.2 Undertaking of the Company

In addition to the obligations set forth in Section 2, the Company has certain other obligations concerning only the provision of Switched Access Service. These obligations are as follows:

5.2.1 Network Management

The Company will administer its network to insure the provision of acceptable service levels to all telecommunications users of the Company's network services. Generally, service levels are considered acceptable only when both end users and Customers are able to establish connections with little or no delay encountered within the Company network. The Company maintains the right to apply protective controls, i.e., those actions, such as call gapping, which selectively cancel the completion of traffic, over any traffic carried over its network, including that associated with a Customer's Switched Access Service.

Issued: December 27, 2013

Issued by: KNOLOGY of Kentucky, Inc. d/b/a WOW! Internet, Cable and Phone
1241 O.G. Skinner Drive
West Point, Georgia 31833

KENTUCKY PUBLIC SERVICE COMMISSION
JEFF R. DEROUEN EXECUTIVE DIRECTOR
TARIFF BRANCH Effective <i>Brent Kirtley</i> , 2013
12/30/2013 PURSUANT TO 807 KAR 5:011 SECTION 9 (1)

INTRASTATE DOMESTIC ACCESS SERVICES

5. SWITCHED ACCESS SERVICES (Cont'd)

5.2 Undertaking of the Company (Cont'd)

5.2.1 Network Management (Cont'd)

Generally, such protective measures would only be taken as a result of occurrences such as failure or overload of Company or Customer facilities, natural disasters, mass calling or national security demands. In the event that the protective controls applied by the Company result in the complete loss of service by the Customer, the Customer will be granted a credit allowance for service interruption as set forth in Section 2.7.2 preceding.

5.2.2 Testing

A. Acceptance Testing

At no additional charge the Company will, at the Customer's request, cooperatively test at the time of installation, the following parameters: loss, C-notched noise, C-message noise, three (3)-tone slope, d.c. continuity and operational signaling. When the local transport is provided with interface groups two (2) through ten (10), and the transport termination is two (2) wire (i.e., there is a four (4) wire to two (2) wire conversion in local transport), balance parameters (equal level echo path loss) may also be tested.

B. Routine Testing

At no additional charge, the Company will, at the Customer's request, test after installation on an automatic or manual basis, 1004 Hz loss, C- message noise and balance (Improved Return loss).

In the case of automatic testing, the customer shall provide remote office test lines and 105 test lines with associated responders or their functional equivalent.

The frequency of these tests will be that which is mutually agreed upon by the Customer and the Company, but shall consist of not less than quarterly 1004 Hz Loss and C-message noise tests and an annual Balance test. Trunk test failures requiring Customer participation for trouble resolution will be provided to the Customer on an as-occurs basis.

Additional tests may be ordered as set forth in ~~KENTUCKY~~

PUBLIC SERVICE COMMISSION

JEFF R. DEROUEN
EXECUTIVE DIRECTOR

TARIFF BRANCH

Effective _____, 2013

Brent Kirtley

PHONE

12/30/2013

PURSUANT TO 807 KAR 5:011 SECTION 9 (1)

Issued: December 27, 2013

Issued by: KNOLOGY of Kentucky, Inc. d/b/a WOW! Internet, Cable and Phone

1241 O.G. Skinner Drive
West Point, Georgia 31833

INTRASTATE DOMESTIC ACCESS SERVICES

5. SWITCHED ACCESS SERVICES (Cont'd)

5.2 Undertaking of the Company (Cont'd)

5.2.3 Trunk Group Measurement Reports

Subject to availability, the Company will make available trunk group data in the form of usage in CCS, peg count and overflow, to the Customer based on previously agreed to intervals.

5.3 Obligations of the Customer

In addition to the obligations of the Customer set forth in Section 2 preceding, the Customer has certain specific obligations pertaining to the use of Switched Access Service. These obligations are as follows:

5.3.1 Report Requirements

Customers are responsible for providing the following reports to the Company, when applicable.

A. Jurisdictional Reports

When a Customer orders Switched Access Service for both interstate and intrastate use, the Customer is responsible for providing Jurisdictional Reports. Charges will be apportioned in accordance with those reports. The method to be used for determining the intrastate charges is set forth in Section 2.3.9 preceding.

B. Code Screening Reports

When a Customer orders service class routing, trunk access limitation or call gapping arrangements, it must report the number of trunks and/or the appropriate codes to be instituted in each end office or access tandem switch, for each of the arrangements ordered.

5.3.2 Supervisory Signaling

The Customer's facilities shall provide the necessary on-hook, off-hook, answer and disconnect supervision.

Issued: December 27, 2013

Issued by: KNOLOGY of Kentucky, Inc. d/b/a WOW! Internet, Cable and Phone
1241 O.G. Skinner Drive
West Point, Georgia 31833

KENTUCKY PUBLIC SERVICE COMMISSION
JEFF R. DEROUEN EXECUTIVE DIRECTOR
TARIFF BRANCH Effective _____, 2013 <i>Brent Kirtley</i>
12/30/2013 PURSUANT TO 807 KAR 5:011 SECTION 9 (1)

INTRASTATE DOMESTIC ACCESS SERVICES

5. SWITCHED ACCESS SERVICES (Cont'd)

5.3 Obligations of the Customer (Cont'd)

5.3.3 Short Duration Mass Calling Requirements

When a Customer offers service for which a substantial call volume is expected during a short period of time (e.g., 900 service media stimulated events), the Customer must notify the Company at least forty-eight (48) hours in advance of each peak period. Notification should include the nature, time, duration, and frequency of the event, an estimated call volume, and the telephone number(s) to be used.

On the basis of the information provided, the Company may invoke network management controls, (e.g., call gapping and code blocking) to reduce the probability of excessive network congestion. The Company will work cooperatively with the Customer to determine the appropriate level of such control.

5.3.4 Design of Switched Access Service

It is the Customer's responsibility to assure that sufficient Access Services have been ordered to handle its traffic.

5.4 Rate Regulations

This Section contains the specific regulations governing the rates and charges that apply for Switched Access Service.

5.4.1 Description and Application of Rate

There are two (2) types of rates and charges that apply to Switched Access Service; recurring (usage and flat rates) and nonrecurring charges. These rates and charges are applied differently to the various rate elements as set forth in paragraph C. following.

Issued: December 27, 2013

Issued by: KNOLOGY of Kentucky, Inc. d/b/a WOW! Internet, Cable and Phone
1241 O.G. Skinner Drive
West Point, Georgia 31833

KENTUCKY PUBLIC SERVICE COMMISSION
JEFF R. DEROUEN EXECUTIVE DIRECTOR
TARIFF BRANCH Effective _____, 2013 <i>Brent Kirtley</i>
12/30/2013 PURSUANT TO 807 KAR 5:011 SECTION 9 (1)

INTRASTATE DOMESTIC ACCESS SERVICES

5. SWITCHED ACCESS SERVICES (Cont'd)

5.4 Rate Regulations (Cont'd)

5.4.1 Descriptions and Application of Rate (Cont'd)

A. Recurring Rates

1. Usage rates for Switched Access Service are rates that apply on a per access minute or a per call basis. Access minute charges and per call charges are accumulated over a monthly period.
2. Flat rates for Switched Access Service are rates that apply on a per month, per rate element basis.

B. Non-recurring Charges

Non-recurring charges are one (1) time charges that apply for a specific work activity (i.e., installation or change to an existing service). The types of non-recurring charges that apply for Switched Access Service are: installation of service and service rearrangements. These charges are in addition to the Access Order Charge.

1. Installation of Service

A non-recurring Local Transport Installation Charge will be applied at the serving wire center for each entrance facility installed. Additionally, a non-recurring Trunk Activation Charge will be applied at each end office when ordered to the end office or at the tandem when ordered to the tandem for each group of activated twenty-four (24) direct trunked transport trunks or fraction thereof. (i.e., designated by the Customer to be used to carry switched access). A maximum of twenty-four (24) trunks can be activated on a DS1 facility and a maximum of six hundred and seventy two (672) trunks can be activated on a DS3 facility.

Issued: December 27, 2013

Issued by: KNOLOGY of Kentucky, Inc. d/b/a WOW! Internet, Cable and Phone
1241 O.G. Skinner Drive
West Point, Georgia 31833

KENTUCKY PUBLIC SERVICE COMMISSION
JEFF R. DEROUEN EXECUTIVE DIRECTOR
TARIFF BRANCH Effective _____, 2013 <i>Brent Kirtley</i>
12/30/2013 PURSUANT TO 807 KAR 5:011 SECTION 9 (1)

INTRASTATE DOMESTIC ACCESS SERVICES

5. SWITCHED ACCESS SERVICES (Cont'd)

5.4 Rate Regulations (Cont'd)

5.4.1 Descriptions and Application of Rate (Cont'd)

B. Non-recurring Charges (Cont'd)

2. Service Rearrangements

All changes to existing services other than changes involving administrative will be treated as a discontinuance of the existing service and an installation of a new service. The non-recurring charge described in paragraph 1. preceding will apply for this work activity. Moves that change the physical location of the point of termination are described and charged for as set forth in Section 5.4.3 following.

Issued: December 27, 2013

Issued by: KNOLOGY of Kentucky, Inc. d/b/a WOW! Internet, Cable and Phone
1241 O.G. Skinner Drive
West Point, Georgia 31833

KENTUCKY PUBLIC SERVICE COMMISSION
JEFF R. DEROUEN EXECUTIVE DIRECTOR
TARIFF BRANCH Effective _____, 2013 <i>Brent Kirtley</i>
12/30/2013 PURSUANT TO 807 KAR 5:011 SECTION 9 (1)

INTRASTATE DOMESTIC ACCESS SERVICES

5. SWITCHED ACCESS SERVICES (Cont'd)

5.4 Rate Regulations (Cont'd)

5.4.1 Description and Application of Rates (Cont'd)

B.Non-recurring Charges (Cont'd)

3. Administrative changes will be made without charge to the Customer. Administrative changes are as follows:

- Change of Customer name;
- Change of Customer or Customer's end user premise address when the change of address is not a result of a physical relocation of equipment;
- Change in billing data (name, address, or contact name or telephone number);
- Change of agency authorization;
- Change of Customer circuit identification;
- Change of billing account number;
- Change of Customer test line number;
- Change of Customer or Customer's end user contact name or telephone number; and
- Change of jurisdiction.

Issued: December 27, 2013

Issued by: KNOLOGY of Kentucky, Inc. d/b/a WOW! Internet, Cable and Phone
1241 O.G. Skinner Drive
West Point, Georgia 31833

KENTUCKY PUBLIC SERVICE COMMISSION
JEFF R. DEROUEN EXECUTIVE DIRECTOR
TARIFF BRANCH Effective _____, 2013 <i>Brent Kirtley</i>
12/30/2013 PURSUANT TO 807 KAR 5:011 SECTION 9 (1)

INTRASTATE DOMESTIC ACCESS SERVICES

5. SWITCHED ACCESS SERVICES (Cont'd)

5.4 Rate Regulations (Cont'd)

5.4.1 Description and Application of Rate (Cont'd)

B. Non-recurring Charges (Cont'd)

4. When a Customer requests a change of trunks from tandem-switched transport to direct trunked transport or from direct trunked transport to tandem-switched transport or requests to rearrange switched access services between lower capacity and higher capacity facilities (e.g. voice grade to/from DS1 or DS1 to/from DS3), the non-recurring charges set forth in (1) preceding do not apply providing the orders to disconnect existing trunks and to connect the new trunks are placed at the same time, and the number of installed trunks does not exceed the number of trunks disconnected. If the number of installed trunks exceeds the number of trunks connected, all non-recurring charges will apply to the excess trunks unless the customer provides justification based upon standard engineering methods to show that the additional capacity is required to maintain the same level of service.
5. For additions, changes or modifications to an optional feature which has a separate non-recurring charge, that non-recurring charge will apply.

Issued: December 27, 2013

Issued by: KNOLOGY of Kentucky, Inc. d/b/a WOW! Internet, Cable and Phone
1241 O.G. Skinner Drive
West Point, Georgia 31833

KENTUCKY PUBLIC SERVICE COMMISSION
JEFF R. DEROUEN EXECUTIVE DIRECTOR
TARIFF BRANCH Effective _____, 2013 <i>Brent Kirtley</i>
12/30/2013 PURSUANT TO 807 KAR 5:011 SECTION 9 (1)

INTRASTATE DOMESTIC ACCESS SERVICES

5. SWITCHED ACCESS SERVICES (Cont'd)

5.4 Rate Regulations (Cont'd)

5.4.1 Description and Application of Rate (Cont'd)

B. Non-recurring Charges (Cont'd)

6. For additions, changes, or modifications to optional features that do not have their own separate non-recurring charges, an Access Order Charge will apply.
7. When an optional feature is not required on each transmission path, but rather for an entire transmission path group, an end office or an access tandem switch, only one such charge will apply (*i.e.*, it will not apply per transmission path).
8. For conversion of FGD trunks from multi-frequency address signaling to SS7 signaling or from SS7 signaling to multi-frequency address signaling, non-recurring charges will apply.

C. Application of Rates

1. Per Minute Rates

Per minute rates apply to all access minutes that originate or terminate at end offices.

In addition, per minute rates always apply to the following local transport rate elements:

- Tandem Switched Facility
- Tandem Switched Termination
- Tandem Switching

Issued: December 27, 2013

Issued by: KNOLOGY of Kentucky, Inc. d/b/a WOW! Internet, Cable and Phone
1241 O.G. Skinner Drive
West Point, Georgia 31833

KENTUCKY PUBLIC SERVICE COMMISSION
JEFF R. DEROUEN EXECUTIVE DIRECTOR
TARIFF BRANCH Effective _____, 2013 <i>Brent Kirtley</i>
12/30/2013 PURSUANT TO 807 KAR 5:011 SECTION 9 (1)

INTRASTATE DOMESTIC ACCESS SERVICES

5. SWITCHED ACCESS SERVICES (Cont'd)

5.4 Rate Regulations (Cont'd)

5.4.1 Description and Application of Rate (Cont'd)

C. Application of Rates (Cont'd)

2. Credit for 888 SAC Traffic

In those instances where an SSP equipped end office is capable of handling 800 SAC traffic on a direct trunked basis, and the Customer has direct trunked transport facilities in place at the end office, but the end office is incapable of handling 888 SAC traffic on a direct trunked basis, a full credit will be provided for Tandem Switched Transport Charges associated with FGD service for 888 SAC traffic delivered at the tandem.

This results in all 800 series traffic being rated as direct trunked transport regardless of whether the SSP equipped end office is capable of handling 888 SAC traffic on a direct trunked basis. The credit will expire when 888 SAC SSP functionality is implemented in the end office.

3. Common Channel Signaling/Signaling System 7 (CCS/SS7) Network Connection Service

The CCS/SS7 network connection is comprised of a Signaling Mileage Facility Charge, a Signaling Mileage Termination Charge, a Signaling Entrance Facility Charge, and a Signaling Transfer Point (STP) Port Charge.

The Signaling Mileage Facility Charge is assessed on a per facility per mile basis. The Signaling Mileage Termination Charge is assessed on a per termination basis (i.e., at each end of the signaling mileage facility). When the signaling mileage facility mileage measurement is zero (0), Signaling Mileage Termination Charges do not apply.

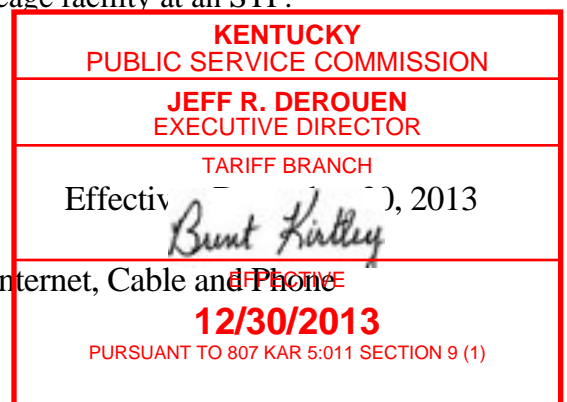
The Signaling Entrance Facility Charge is assessed on a per facility basis for the connection between the Customer's designated premise (Signaling Point of Interface) and the serving wire center of that premise.

The STP Port Charge is assessed on a per port basis for each termination of a signaling mileage facility at an STP.

Issued: December 27, 2013

Issued by: KNOLOGY of Kentucky, Inc. d/b/a WOW! Internet, Cable and Phone

1241 O.G. Skinner Drive
West Point, Georgia 31833



INTRASTATE DOMESTIC ACCESS SERVICES

5. SWITCHED ACCESS SERVICES (Cont'd)

5.4 Rate Regulations (Cont'd)

5.4.1 Description and Application of Rate (Cont'd)

C. Application of Rates (Cont'd)

4. 800 Series Data Base Access Service

A Basic Query or Vertical Feature Query Charge applies for each query that is launched to an 800 series data base and identifies the Customer to whom the call will be delivered. Query Charges will only be applied by those companies whose wire centers can perform such queries.

When FG D Switched Access Service is used for the provision of 800 Series Data Base Access Service and the total minutes of use and/or count of queries can be determined for each Customer at a tandem or SSP but can not be determined by individual end offices, an allocation method will be utilized to determine minutes of use and/or queries by end office and Customer. For each end office a ratio will be developed and applied against the total minutes of use and/or count of queries for a given Customer as determined by the tandem or SSP. These ratios will be developed by dividing the unidentified originating 800 series type minutes of use at an end office by the total unidentified originating minutes of use in all end offices subtending the tandem or SSP.

5. Shared Transport

Shared transport refers to a rate application that is applicable only when the Customer orders high capacity direct trunked transport between a serving wire center and a Company hub where the Company performs multiplexing/de-multiplexing functions and the same Customer then orders the derived channels as direct trunked transport and tandem switched transport.

Except as noted above, the Switched Access Service will be ordered, provided and rated as direct trunked transport. As each derived channel is activated for tandem switched transport, the High Capacity Direct Trunked Transport and Multiplexing Charges will be reduced accordingly. Tandem Switched Transport rates and charges will apply for each channel that is used to provide the tandem switched transport.

Issued: December 27, 2013

Issued by: KNOLOGY of Kentucky, Inc. d/b/a WOW! Internet, Cable and Phone

1241 O.G. Skinner Drive
West Point, Georgia 31833

KENTUCKY PUBLIC SERVICE COMMISSION
JEFF R. DEROUEN EXECUTIVE DIRECTOR
TARIFF BRANCH Effective _____, 2013 <i>Brent Kirtley</i>
12/30/2013 PURSUANT TO 807 KAR 5:011 SECTION 9 (1)

INTRASTATE DOMESTIC ACCESS SERVICES

5. SWITCHED ACCESS SERVICES (Cont'd)

5.4 Rate Regulations (Cont'd)

5.4.2 Moves

A move involves a change in the physical location of one (1) of the following:

- The point of termination at the Customer designated premise
- The Customer designated premise

The charges for the move are dependent on whether the move is to a new location within the same building or to a different building.

A. Moves Within the Same Building

When the move is to a new location within the same building, the charge for the move will be an amount equal to one half (1/2) of the installation nonrecurring charge for the capacity affected. This charge is in addition to the Access Order Charge. There will be no change in the minimum period requirements.

B. Moves to a Different Building

Moves to a different building will be treated as a discontinuance and start of service and all associated nonrecurring charges will apply. New minimum period requirements will be established for the new service. The Customer will also remain responsible for satisfying all outstanding minimum period charges for the discontinued service.

5.4.3 Mileage Measurement

Mileage Measurement Charges are set forth in Section 7.
Exceptions to the mileage measurement rules are as follows:

A. Alternate Traffic Routing

When the Alternate Traffic Routing optional feature is provided, the Local Transport access minutes will be apportioned between the two trunk groups used to provide this feature. Such apportionment will be made using: 1) actual minutes of use if available, 2) standard Company traffic engineering methodology and will be based on the last trunk CCS desired for the high usage group, as described in Section 5.4.4., or 3) an apportionment mutually agreed to by the Company and the Customer. This apportionment will serve as the basis for Public Service Commission

Issued: December 27, 2013

Issued by: KNOLOGY of Kentucky, Inc. d/b/a WOW! Internet, Cable and Phone

1241 O.G. Skinner Drive
West Point, Georgia 31833

KENTUCKY PUBLIC SERVICE COMMISSION
JEFF R. DEROUEN EXECUTIVE DIRECTOR
TARIFF BRANCH Effective _____, 2013 <i>Brent Kirtley</i>
12/30/2013 PURSUANT TO 807 KAR 5:011 SECTION 9 (1)

INTRASTATE DOMESTIC ACCESS SERVICES

5. SWITCHED ACCESS SERVICES (Cont'd)

5.4 Rate Regulations (Cont'd)

5.4.3 Mileage Measurement (Cont'd)

B. Feature Group D - WATS

The local transport facility for Feature Groups D Switched Access Service connected with Special Access Service at a WATS serving office will be measured between the WATS serving office (when measured access minutes of use are used) and the serving wire center for the Customer designated premise.

C. Use of the Company Hub

When multiplexing is performed at Company hubs, mileage is computed and rates applied separately for each segment of the local transport direct trunked facility (i.e., Customer serving wire center to hub, hub to hub, and/or hub to end office).

5.4.4 Non-Chargeable Optional Features

Following are descriptions of the various non-chargeable optional features that are available in lieu of, or in addition to, the standard features.

Common Switching Options

A. Automatic Number Identification (ANI)

This option provides the automatic transmission of a seven (7) digit or ten (10) digit number and information digits to the Customer designated premise for calls originating in the LATA, to identify the calling station.

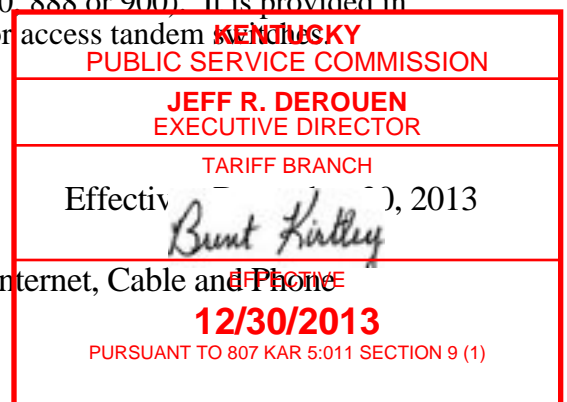
B. Service Class Routing

This option provides the capability to direct originating traffic from an end office to a trunk group or a Customer designated premise, based on the line class of service (e.g., coin, multiparty or hotel/motel), service prefix indicator (e.g., 0-, 0+, 01+ or 011+) or Service Access Code (e.g., 800, 888 or 900). It is provided in suitably equipped end office or access tandem.

Issued: December 27, 2013

Issued by: KNOLOGY of Kentucky, Inc. d/b/a WOW! Internet, Cable and Phone

1241 O.G. Skinner Drive
West Point, Georgia 31833



INTRASTATE DOMESTIC ACCESS SERVICES

5. SWITCHED ACCESS SERVICES (Cont'd)

5.4 Rate Regulations (Cont'd)

5.4.4 Non-Chargeable Optional Features (Cont'd)

Common Switching Options (Cont'd)

C. Alternate Traffic Routing

When the Customer orders both direct trunked transport and tandem switched transport at the same end office this option provides the capability of directing originating traffic from an end office (or appropriately equipped access tandem) to a trunk group (the "high usage" group) or to a Customer designated premise until that group is fully loaded, and then delivering additional originating traffic (the "overflowing" traffic) from the same end office or access tandem to a different trunk group (the "final" group) or to a second Customer designated premise. The Customer shall specify the last trunk CCS desired for the high usage group. It is provided in suitably equipped end office or access tandem switches.

D. Trunk Access Limitation

This option provides for the routing of originating 900 service calls to a specified number of transmission paths in a trunk group, in order to limit (choke) the completion of such traffic to the Customer. Calls to the designated service which could not be completed over the subset of transmission paths in the trunk group, i.e., the choked calls, would be routed to reorder tone. It is provided in all Company electronic end offices.

E. Call Gapping Arrangement

This option, provided in suitably equipped end office switches, provides for the routing of originating calls to 900 Service to be switched in the end office to all transmission paths in a trunk group at a prescribed rate of flow, e.g., one call every five (5) seconds, in order to limit (choke) the completion of such traffic to the Customer. Calls to the designated service which are denied access by this feature would be routed to a no-circuit announcement.

Issued: December 27, 2013

Issued by: KNOLOGY of Kentucky, Inc. d/b/a WOW! Internet, Cable and Phone

1241 O.G. Skinner Drive
West Point, Georgia 31833

KENTUCKY PUBLIC SERVICE COMMISSION
JEFF R. DEROUEN EXECUTIVE DIRECTOR
TARIFF BRANCH Effective _____, 2013 <i>Brent Kirtley</i>
12/30/2013 PURSUANT TO 807 KAR 5:011 SECTION 9 (1)

INTRASTATE DOMESTIC ACCESS SERVICES

5. SWITCHED ACCESS SERVICES (Cont'd)

5.4 Rate Regulations (Cont'd)

5.4.4 Non-Chargeable Optional Features (Cont'd)

Common Switching Options (Cont'd)

F. International Carrier Option

This option allows for end offices or access tandem switches equipped for International Direct Distance Dialing (IDDD) to be arranged to forward the international calls of one (1) or more International Carriers to the Customer (i.e., the Company is able to route originating international calls to a Customer other than the one designated by the end user either through presubscription or access code dialing). This arrangement requires provision of written verification to the Company that the Customer is authorized to forward such calls. The written verification must be in the form of a letter of agency authorizing the Customer to order the option on behalf of the International Carrier.

G. Band Advance Arrangement for Use with Special Access Service Utilized in the Provision of WATS or WATS-Type Services

This option, which is provided in association with two (2) or more Special Access Service groups, provides for the automatic overflow of terminating calls to a second Special Access Service group, when the first group has exceeded its call capacity.

H. End Office End User Line Service Screening for Use with Special Access Service Utilized in the Provision of WATS or WATS-Type Services

This option provides the ability to verify that an end user has dialed a called party address (by screening the called NPA and/or NXX on the basis of geographical bands selected by the Company) which is in accordance with that end user's service agreement with the Customer, e.g., WATS. This option is provided in all Kentucky end offices which are designated as WATS Serving Offices.

Issued: December 27, 2013

Issued by: KNOLOGY of Kentucky, Inc. d/b/a WOW! Internet, Cable and Phone
1241 O.G. Skinner Drive
West Point, Georgia 31833

KENTUCKY PUBLIC SERVICE COMMISSION
JEFF R. DEROUEN EXECUTIVE DIRECTOR
TARIFF BRANCH Effective _____, 2013 <i>Brent Kirtley</i>
12/30/2013 PURSUANT TO 807 KAR 5:011 SECTION 9 (1)

INTRASTATE DOMESTIC ACCESS SERVICES

5. SWITCHED ACCESS SERVICES (Cont'd)

5.4 Rate Regulations (Cont'd)

5.4.4 Non-Chargeable Optional Features (Cont'd)

Common Switching Options (Cont'd)

- I. Hunt Group Arrangement for Use with Special Access Service Utilized in the Provision of WATS or WATS-Type Services
This option provides the ability to sequentially access one (1) of two (2) or more Special Access Services utilized in the provision of WATS Services (e.g., 800 Series Service Special Access services) in the terminating direction, when the hunting number of the Special Access Service group is forwarded from the Customer to the Company. This feature is provided in all Company designated WATS Serving Offices.

- J. Uniform Call Distribution Arrangement for Use with Special Access Service Utilized in the Provision of WATS or WATS-Type Services
This option provides a type of multi-line hunting arrangement which provides for an even distribution of terminating calls among the available Special Access Services utilized in the provision of WATS or WATS-type Services in the hunt group. Where available, this feature is only provided in Company designated WATS Serving Offices.

- K. Nonhunting Number Associated with Hunt Group Arrangement or Uniform Call Distribution Arrangement for Use with Special Access Service Utilized in the Provision of WATS or WATS-Type Services
This option provides an arrangement for an individual Special Access Service utilized in the provision of WATS or WATS-type Services within a multi-line hunt or uniform call distribution group, that provides access to that Special Access Service within the hunt or uniform call distribution group when it is idle or provide busy tone when it is busy, when the nonhunting number is dialed, without hunting to the next idle number. Where available, this feature is only provided in Company designated WATS Serving Offices.

Issued: December 27, 2013

Issued by: KNOLOGY of Kentucky, Inc. d/b/a WOW! Internet, Cable and Phone
1241 O.G. Skinner Drive
West Point, Georgia 31833

KENTUCKY PUBLIC SERVICE COMMISSION
JEFF R. DEROUEN EXECUTIVE DIRECTOR
TARIFF BRANCH Effective _____, 2013 <i>Brent Kirtley</i>
12/30/2013 PURSUANT TO 807 KAR 5:011 SECTION 9 (1)

INTRASTATE DOMESTIC ACCESS SERVICES

5. SWITCHED ACCESS SERVICES (Cont'd)

5.4 Rate Regulations (Cont'd)

5.4.4 Non-Chargeable Optional Features (Cont'd)

Common Switching Options (Cont'd)

L. Digital Switched 56 Service

This option provides for a connection between a Customer's premise and a suitably equipped end user's premise which uses end office switching and facilities capable of transmitting digital data up to 56 Kilobits per second. Digital Switched 56 Service is only available in appropriately provisioned Feature Group D offices

Transport Termination Options

Operator Trunk - Full Feature

This option provides the initial coin return control function to the Customer's operator. It is provided as a trunk type for transport termination. This feature is not available with SS7 signaling.

Local Transport Options

A. Supervisory Signaling

When the transmission parameters permit, and where signaling conversion is required by the Customer to meet its signaling capability, the Customer may order an optional supervisory signaling arrangement in the form of multi-frequency signaling for each transmission path.

B. Multi-frequency Address Signaling

This optional feature provides for the transmission of number information and control signals (e.g., number address signals, automatic number identification) between the end office switch and the Customer's premise (in either direction). Multi-frequency signaling arrangements make use of pairs of frequencies out of a group of six (6) frequencies. Specific information is dependent upon call type (i.e., POTS, coin or operator). This feature is not available in combination with SS7 signaling.

Issued: December 27, 2013

Issued by: KNOLOGY of Kentucky, Inc. d/b/a WOW! Internet, Cable and Phone

1241 O.G. Skinner Drive
West Point, Georgia 31833

KENTUCKY PUBLIC SERVICE COMMISSION JENNIFER EXECUTIVE DIRECTOR
TARIFF BRANCH Effective (), 2013 <i>Brent Kirtley</i>
12/30/2013 PURSUANT TO 807 KAR 5:011 SECTION 9 (1)

INTRASTATE DOMESTIC ACCESS SERVICES

5. SWITCHED ACCESS SERVICES (Cont'd)

5.4 Rate Regulations (Cont'd)

5.4.4 Non-Chargeable Optional Features (Cont'd)

Local Transport Options (Cont'd)

C. Signaling System 7 (SS7) Signaling

SS7 is provided in both the originating and terminating direction on FGD and each signaling connection is provisioned for two (2) way SS7 signaling information. This feature provides common channel out of band transmission of address and supervisory SS7 protocol signaling information between the end office switch or the tandem office switching system and the Customer's designated premise. This option requires the establishment of a signaling connection between the Customer's designated premise/ Signaling Point of Interface and a Company's Signaling Transfer Point (STP). The signaling information is transmitted over facilities provided with the Common Channel Signaling/Signaling System 7 Interconnection Service. This will be provided in accordance with the SS7 Interconnect specifications described in Technical Reference TR-TSV-000905.

D. Calling Party Number (CPN)

This feature provides for the automatic transmission of the ten (10) digit directory number, associated with a calling station, to the Customer's premise for calls originating in the LATA. The ten (10) digit telephone number consists of the NPA plus the seven (7) digit telephone number, which may or may not be the same number as the calling station's charge number. The ten (10) digit telephone number will be coded as presented, or restricted via a "privacy indicator" for delivery to the called end user. This feature is provided with originating FGD with SS7 signaling. CPN is available where technically feasible.

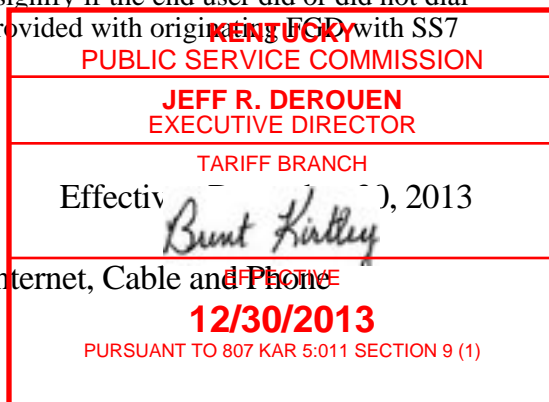
E. Carrier Selection Parameter (CSP)

This feature provides for the automatic transmission of a signaling indicator which signifies to the Customer whether or not the call being processed originated from a presubscribed line. If the line was presubscribed, the indicator will signify if the end user did or did not dial an access code. This feature is provided with originating FGD with SS7 signaling.

Issued: December 27, 2013

Issued by: KNOLOGY of Kentucky, Inc. d/b/a WOW! Internet, Cable and Phone

1241 O.G. Skinner Drive
West Point, Georgia 31833



INTRASTATE DOMESTIC ACCESS SERVICES

5. SWITCHED ACCESS SERVICES (Cont'd)

5.4 Rate Regulations (Cont'd)

5.4.4 Non-Chargeable Optional Features (Cont'd)

Local Transport Options (Cont'd)

F. Charge Number Parameter (CNP)

The CN Parameter is equivalent to the existing ten (10) digit Automatic Number Identification (ANI) available with FGD with MF signaling. The CN Parameter provides for the automatic transmission of the ten (10) digit billing number of the calling station and the originating line information. This feature is provided with originating FGD with SS7 signaling.

G. Feature Group D with 950 Access

This option provides for the routing of originating calls, dialed using a 950-1XXX or 950-0XXX access code, to the FGD Customer using FGD signaling protocols and technical specifications. The Customer is responsible for distinguishing between standard FGD calls and 950-dialed calls delivered over the same trunks.

5.4.5 Chargeable Optional Features

A. Operator Transfer Service

At the option of the Customer, Operator Transfer Service as specified following, is available for use with Feature Group D Switched Access Service. Operator Transfer Service is ordered as set forth in Section 3.2 preceding and is provided to the Customer via separate FGD trunks dedicated to Operator Transfer Service traffic.

Operator Transfer Service is an arrangement in which Company operators transfer 0 minus (0-) calls (calls for which the end user dials 0 with no additional digits) to the Customer designated by the end user.

Issued: December 27, 2013

Issued by: KNOLOGY of Kentucky, Inc. d/b/a WOW! Internet, Cable and Phone

1241 O.G. Skinner Drive
West Point, Georgia 31833

KENTUCKY PUBLIC SERVICE COMMISSION
JEFF R. DEROUEN EXECUTIVE DIRECTOR
TARIFF BRANCH Effective _____, 2013 <i>Brent Kirtley</i>
12/30/2013 PURSUANT TO 807 KAR 5:011 SECTION 9 (1)

INTRASTATE DOMESTIC ACCESS SERVICES

5. SWITCHED ACCESS SERVICES (Cont'd)

5.4 Rate Regulations (Cont'd)

5.4.5 Chargeable Optional Features (Cont'd)

A. Operator Transfer Service (Cont'd)

The operator transfer function will be performed in the following manner:

- The operator answers the 0- call.
 - Initially, the Operator will suggest that the end user dial the Customer on a direct basis. If the end user insists that the Operator transfer the call, the Operator will ask the end user to identify the desired Customer and will then transfer the call as directed.
- If the end user has no preference, or the identified Customer has not subscribed to Operator Transfer Service, the end user will be asked to select from a list of options.

The list of available Operator Transfer Service Customers will be updated monthly. The order in which Customers will be read to end uses will be random.

Zero minus (0-) Public Coin calls will be transferred to the end user designated Customer. In order to accept coin sent- paid calls, the Customer must order signaling as specified in TR-TSY-000506 and TR-NPL-000258 .

The Customer may receive inband, multi-wink, or expanded inband coin control signaling, where available, from end offices served by an Operator Services Access Point. Different signaling types cannot be mixed on a signal trunk group.

All non-recurring and usage sensitive rates and charges normally applicable to FGD apply to Operator Transfer Service. Additionally, a charge as specified in Section 5.1.3 is assessed the Customer per zero minus (0-) call transferred.

Issued: December 27, 2013

Issued by: KNOLOGY of Kentucky, Inc. d/b/a WOW! Internet, Cable and Phone
1241 O.G. Skinner Drive
West Point, Georgia 31833

KENTUCKY PUBLIC SERVICE COMMISSION
JEFF R. DEROUEN EXECUTIVE DIRECTOR
TARIFF BRANCH Effective _____, 2013 <i>Brent Kirtley</i>
12/30/2013 PURSUANT TO 807 KAR 5:011 SECTION 9 (1)

INTRASTATE DOMESTIC ACCESS SERVICES

5. SWITCHED ACCESS SERVICES (Cont'd)

5.4 Rate Regulations (Cont'd)

5.4.5 Chargeable Optional Features (Cont'd)

B. Common Channel Signaling/Signaling System 7 Network Connection Service (CCSNC)

Common Channel Signaling/Signaling System 7 (CCS/SS7) Network Connection Service (CCSNC), where technically feasible, provides a signaling path between a Customer's designated Signaling Point of Interface (SPOI) and a Signaling Transfer Point (STP). This service provides Customers with the use of a two (2) way signaling path for accessing information necessary for the completion of their end user's calls.

CCS/SS7 Network Connection Service is comprised of two (2) rate elements; a Signaling Network Access Link (SNAL) and a Signaling Transfer Point (STP) Port. The SNAL is provided as a dedicated 56 Kbps out-of-band signaling connection between the customer's SPOI and the STP port on the STP.

The CCS/SS7 Network Connection Service is provisioned by a mated pair of STPs as described in Technical Reference TR-TSV 000905 in order to ensure network availability and reliability. The Company shall not be held liable for service outages if the Customer employs technology related to the interconnection of signaling networks that does not adhere to generally accepted industry technical standards.

When CCS/SS7 Network Connection service is provisioned for use with SS7 Signaling, interconnection between signaling networks must occur at an STP.

Issued: December 27, 2013

Issued by: KNOLOGY of Kentucky, Inc. d/b/a WOW! Internet, Cable and Phone
1241 O.G. Skinner Drive
West Point, Georgia 31833

KENTUCKY PUBLIC SERVICE COMMISSION
JEFF R. DEROUEN EXECUTIVE DIRECTOR
TARIFF BRANCH Effective _____, 2013 <i>Brent Kirtley</i>
12/30/2013 PURSUANT TO 807 KAR 5:011 SECTION 9 (1)

INTRASTATE DOMESTIC ACCESS SERVICES

5. SWITCHED ACCESS SERVICES (Cont'd)

5.4 Rate Regulations (Cont'd)

5.4.5 Chargeable Optional Features (Cont'd)

C. 800 Series Data Base Access Service

800 Series Data Base Access Service is provided with FGD Switched Access Service. When a call using a toll free service access code (SAC) (e.g., 1+800 or 888+NXX-XXXX) is originated by an end user, the Company will utilize the Signaling System 7 (SS7) network to query an 800 series service data base to perform the identification function. The call will then be routed to the identified Customer over FGD switched access trunking.

The manner in which 800 Series Data Base Access Service is provided is dependent on the availability of SS7 Service at the end office from which the service is provided as outlined below.

If 800 Series Data Base Access Service originates at an end office equipped with Service Switching Point (SSP) capability for querying centralized data bases or at a non-SSP equipped end office that can accommodate direct trunking of originating 800 series service type calls, all such service will be provisioned from that end office. If the end office is not equipped with the 888 SAC SSP capability the Customer must order tandem switched transport trunking to receive such traffic until the 888 SAC SSP capability becomes available.

If 800 Series Data Base Access Service originates at an end office not equipped with SSP Customer identification capability the 800 series service type call will be delivered to the access tandem on which the end office is homed and which is equipped with the SSP feature to query centralized data bases.

Query charges are in addition to those charges applicable for the FGD Switched Access Service.

Issued: December 27, 2013

Issued by: KNOLOGY of Kentucky, Inc. d/b/a WOW! Internet, Cable and Phone
1241 O.G. Skinner Drive
West Point, Georgia 31833

KENTUCKY PUBLIC SERVICE COMMISSION
JEFF R. DEROUEN EXECUTIVE DIRECTOR
TARIFF BRANCH Effective _____, 2013 <i>Brent Kirtley</i>
12/30/2013 PURSUANT TO 807 KAR 5:011 SECTION 9 (1)

INTRASTATE DOMESTIC ACCESS SERVICES

5. SWITCHED ACCESS SERVICES (Cont'd)

5.4 Rate Regulations (Cont'd)

5.4.6 Design and Traffic Routing

The Company shall design and determine the routing of Tandem Switched Access Service, including the selection of the first point of switching and the selection of facilities from the interface to any switching. The Company shall also decide if capacity is to be provided by originating only, terminating only, or two (2) way trunk groups. Finally, the Company will decide whether trunk side access will be provided through the use of two (2) wire or four (4) wire trunk terminating equipment.

For Direct Trunked Transport Service, the Company will determine the routing of the service from the point of interface to the first point of switching. If the Customer specifies one (1) or more hub locations for multiplexing the routing will be determined from the point of interface to the hub location, from one hub location to another hub location, and/or from a hub location to the first point of switching.

Selection of facilities and equipment and traffic routing of the service are based on standard engineering methods, available facilities and equipment, and actual traffic patterns.

5.4.7 Measuring Access Minutes

Customer traffic to end offices will be recorded at end office switches or access tandem switches. Originating and terminating calls will be measured or derived to determine the basis for computing chargeable access minutes. In the event the Customer message detail is not available because the Company lost or damaged tapes or incurred recording system outages, the Company will estimate the volume of lost Customer access minutes of use based on previously known values.

FGD access minutes or fractions thereof, the exact value of the fraction being a function of the switch technology where the measurement is made, are accumulated over the billing period for each end office, and are then rounded up to the nearest access minute for each end office.

Issued: December 27, 2013

Issued by: KNOLOGY of Kentucky, Inc. d/b/a WOW! Internet, Cable and Phone
1241 O.G. Skinner Drive
West Point, Georgia 31833

KENTUCKY PUBLIC SERVICE COMMISSION
JEFF R. DEROUEN EXECUTIVE DIRECTOR
TARIFF BRANCH Effective _____, 2013 <i>Brent Kirtley</i>
12/30/2013 PURSUANT TO 807 KAR 5:011 SECTION 9 (1)

INTRASTATE DOMESTIC ACCESS SERVICES

5. SWITCHED ACCESS SERVICES (Cont'd)

5.4 Rate Regulations (Cont'd)

5.4.7 Measuring Access Minutes (Cont'd)

Originating Usage

For originating calls over FGD the measured minutes are the chargeable access minutes.

For originating calls over FGD, provided with MF Signaling, usage measurement begins when the originating FGD first point of switching receives the first wink supervisory signal forwarded from the Customer's point of termination.

For originating calls over FGD provided with Signaling System 7 (SS7) Signaling when the FGD end office is not routed through an access tandem for connection to the Customer, usage measurement begins when the SS7 initial address message is sent from the Service Switching Point (SSP) to the Service Transfer Point (STP).

For originating calls over FGD provided with Signaling System 7 (SS7) signaling when the FGD end office is routed through a tandem for connection to the Customer, usage measurement begins when the FGD end office receives the SS7 exit message from the tandem.

Issued: December 27, 2013

Issued by: KNOLOGY of Kentucky, Inc. d/b/a WOW! Internet, Cable and Phone
1241 O.G. Skinner Drive
West Point, Georgia 31833

KENTUCKY PUBLIC SERVICE COMMISSION
JEFF R. DEROUEN EXECUTIVE DIRECTOR
TARIFF BRANCH Effective _____, 2013 <i>Brent Kirtley</i>
12/30/2013 PURSUANT TO 807 KAR 5:011 SECTION 9 (1)

INTRASTATE DOMESTIC ACCESS SERVICES

5. SWITCHED ACCESS SERVICES (Cont'd)

5.4 Rate Regulations (Cont'd)

5.4.7 Measuring Access Minutes (Cont'd)

The measurement of originating call usage over FGD provided with MF signaling ends when the originating FGD first point of switching receives disconnect supervision from either the originating end user's end office, indicating the originating end user has disconnected, or the Customer's point of termination, whichever is recognized first by the first point of switching.

The measurement of originating call usage over FGD provided with SS7 signaling ends when the originating FGD end office receives an SS7 release message indicating either the originating or terminating end user has disconnected.

Terminating Usage

For terminating calls over FGD the chargeable access minutes are either measured or derived.

For terminating calls over FGD provided with MF signaling, where measurement capability exists, the measurement of chargeable access minutes begins when the terminating FGD first point of switching receives answer supervision from the terminating end user's end office, indicating the terminating end user has answered. This measurement ends when the terminating FGD first point of switching receives disconnect supervision from either the terminating end user's end office, indicating the terminating end user has disconnected, or the Customer's point of termination, whichever is recognized first by the first point of switching.

For terminating calls over FGD, where measurement capability does not exist, terminating FGD usage is derived from originating usage, excluding usage from calls to closed end services or Directory Assistance Services.

For terminating calls over FGD with SS7 signaling, usage measurement begins when the terminating recording switch receives answer supervision from the terminating end user. The Company switch receives answer supervision and sends the indication to the Customer in the form of an answer message. The measurement of terminating FGD call usage ends when the entry switch receives or sends a release message, whichever occurs first.

Issued: December 27, 2013

Issued by: KNOLOGY of Kentucky, Inc. d/b/a WOW! Internet, Cable and Phone

1241 O.G. Skinner Drive
West Point, Georgia 31833

KENTUCKY PUBLIC SERVICE COMMISSION
JEFF R. DEROUEN EXECUTIVE DIRECTOR
TARIFF BRANCH Effective _____, 2013 <i>Brent Kirtley</i>
12/30/2013 PURSUANT TO 807 KAR 5:011 SECTION 9 (1)

INTRASTATE DOMESTIC ACCESS SERVICES

5. SWITCHED ACCESS SERVICES (Cont'd)

5.4 Rate Regulations (Cont'd)

5.4.8 Testing Capabilities

FGD is provided, in the terminating direction where equipment is available, with seven (7) digit access to balance (100 type) test line, milliwatt (102 type) test line, non synchronous or synchronous test line, automatic transmission measuring (105 type) test line, data transmission (107 type) test line, loop around test line, short circuit test line and open circuit test line. In addition to the tests described in Section 5.2.2 preceding, which are included with the installation of service (acceptance testing) and as ongoing routine testing, additional cooperative acceptance testing, additional automatic testing and additional manual testing, are available as set forth in Section 10 following.

When SS7 Signaling is ordered, network compatibility and other testing will be performed cooperatively by the Company and the Customer as specified in Technical References TR-TSV 000905.

5.4.9 Special Construction Rate Determination

Rates and charges for special construction will be determined by the Company on an Individual Case Basis and based in part, on the costs incurred by the Company and may include 1) non-recurring type charges, 2) recurring type charges, 3) termination liabilities, or 4) combinations thereof.

Issued: December 27, 2013

Issued by: KNOLOGY of Kentucky, Inc. d/b/a WOW! Internet, Cable and Phone
1241 O.G. Skinner Drive
West Point, Georgia 31833

KENTUCKY PUBLIC SERVICE COMMISSION
JEFF R. DEROUEN EXECUTIVE DIRECTOR
TARIFF BRANCH Effective _____, 2013 <i>Brent Kirtley</i>
12/30/2013 PURSUANT TO 807 KAR 5:011 SECTION 9 (1)

INTRASTATE DOMESTIC ACCESS SERVICES

6. SPECIAL ACCESS SERVICE

6.1 General

Special Access Service provides a dedicated transmission path to connect a Customer designated premise, directly, through a Company hub or hubs where bridging or multiplexing functions are performed, or to connect a Customer designated premise and a WATS Serving Office. The Company Centrex CO and CO-like switches and packet switches included in Public Packet Switching Network (PPSN) Service are considered to be Customer designated premise for purpose of this Tariff. Special Access includes all exchange access not utilizing the Company's switching equipment. Special Access Service consists of any of the services offered hereunder, either individually or in combination. Each service is offered independently of all others.

The connections provided by Special Access Service can be either analog or digital. A analog connection is differentiated by spectrum and bandwidth. A digital connection is differentiated by bit rate.

Company services may be connected to the services or facilities of other communications carriers only when authorized by, in accordance with, the terms and conditions of any Tariffs of such other communications carriers.

Rates and charges for Special Access Service are set forth in Section 16 following.

Issued: December 27, 2013

Issued by: KNOLOGY of Kentucky, Inc. d/b/a WOW! Internet, Cable and Phone
1241 O.G. Skinner Drive
West Point, Georgia 31833

KENTUCKY PUBLIC SERVICE COMMISSION
JEFF R. DEROUEN EXECUTIVE DIRECTOR
TARIFF BRANCH Effective _____, 2013 <i>Brent Kirtley</i>
12/30/2013 PURSUANT TO 807 KAR 5:011 SECTION 9 (1)

INTRASTATE DOMESTIC ACCESS SERVICES

6. SPECIAL ACCESS SERVICE (Cont'd)

6.2 Description

6.2.1 Voice Grade Service

6.2.1.2 Basic Channel Description

A voice grade channel provides voice frequency transmission capability in the nominal frequency range of 300 to 3000 Hz and may be terminated two (2) wire or four (4) wire. Voice grade channels are provided between Customer designated premise, between a Customer designated premise and a Company hub or hubs, or between a Customer designated premise and a WATS Serving Office (WSO).

6.2.1.3 Optional Features and Functions

A. Central Office Bridging Capability

1. Voice Bridging (two (2) wire and four (4) wire)
2. Data Bridging (two (2) wire and four (4) wire)

Issued: December 27, 2013

Issued by: KNOLOGY of Kentucky, Inc. d/b/a WOW! Internet, Cable and Phone
1241 O.G. Skinner Drive
West Point, Georgia 31833

KENTUCKY PUBLIC SERVICE COMMISSION
JEFF R. DEROUEN EXECUTIVE DIRECTOR
TARIFF BRANCH Effective _____, 2013 <i>Brent Kirtley</i>
12/30/2013 PURSUANT TO 807 KAR 5:011 SECTION 9 (1)

INTRASTATE DOMESTIC ACCESS SERVICES

6. SPECIAL ACCESS SERVICE (Cont'd)

6.2 Description (Cont'd)

6.2.1 Voice Grade Service (Cont'd)

6.2.1.3 Optional Features and Functions (Cont'd)

B. Conditioning

Conditioning provides more specific transmission characteristics for Voice Grade Services.

1. C-Type Conditioning

C-Type conditioning is provided for the additional control of attenuation distortion and envelope delay distortion on data services. The attenuation distortion and envelope delay distortion specifications for C-Type Conditioning are delineated in Technical Reference TR-TSY-000335.

2. D-Type Conditioning (Digital Capability)

D-Type conditioning provides transmission characteristics suitable for data communications. Specifically, D-Type conditioning provides for the control of the signal to C-notched noise ratio and intermodulation distortion. It is available for two (2) point services or multipoint services.

Issued: December 27, 2013

Issued by: KNOLOGY of Kentucky, Inc. d/b/a WOW! Internet, Cable and Phone
1241 O.G. Skinner Drive
West Point, Georgia 31833



INTRASTATE DOMESTIC ACCESS SERVICES

6. SPECIAL ACCESS SERVICE (Cont'd)

6.2 Description (Cont'd)

6.2.1 Voice Grade Services (Cont'd)

6.2.1.3 Optional Features and Functions (Cont'd)

The Signal to C-Notched Noise Ratio and Intermodulation Distortion Parameter for data capability are delineated in Technical Reference TR-TSY-000335.

When a service equipped with data capability is used for voice communications, the quality of the voice transmission may not be satisfactory.

C. Customer Specified Premise Receive Level

This option allows the Customer to specify the receive level at the Point of Termination (POT). The level must be within a specific range on effective four (4) wire transmission. The ranges are delineated in Technical Reference TR-TSY-000335.

D. Improved Return Loss

1. On Effective Four (4) Wire Transmission at Four (4) Wire Point of Termination (POT) (applicable to each two (2) wire port): Provides for a fixed 600 ohm impedance, variable level range and simplex reversal. Company equipment is required at the Customer's premise where this option is ordered. The Improved Return Loss parameters are delineated in Technical Reference TR-TSY-000335.

Issued: December 27, 2013

Issued by: KNOLOGY of Kentucky, Inc. d/b/a WOW! Internet, Cable and Phone
1241 O.G. Skinner Drive
West Point, Georgia 31833

KENTUCKY PUBLIC SERVICE COMMISSION
JEFF R. DEROUEN EXECUTIVE DIRECTOR
TARIFF BRANCH Effective _____, 2013 <i>Brent Kirtley</i>
12/30/2013 PURSUANT TO 807 KAR 5:011 SECTION 9 (1)

INTRASTATE DOMESTIC ACCESS SERVICES

6. SPECIAL ACCESS SERVICE (Cont'd)

6.2 Description (Cont'd)

6.2.1 Voice Grade Services (Cont'd)

6.2.1.3 Optional Features and Functions (Cont'd)

2. On Effective Two (2) Wire Transmission at Two (2) Wire Point of Termination (POT): Provides for more stringent echo control specifications. In order for this option to be applicable, the transmission path must be four (4) wire at one POT and two (2) wire at the other POT. Placement of Company equipment may be required at the Customer's premise with the two (2) wire POT. The Improved Return Loss parameters are delineated in Technical Reference TR-TSY-000335.

E. Signaling Capability

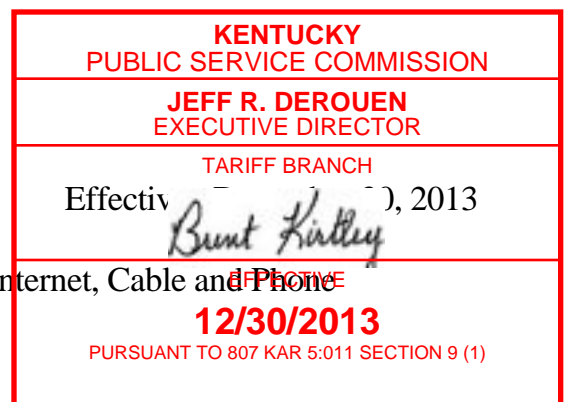
Signaling Capability provides for the ability to transmit signals from one Customer premise to another Customer premise on the same service.

F. Selective Signaling Arrangement

An arrangement that permits code selective ringing for up to ten (10) codes on a multipoint service.

Issued: December 27, 2013

Issued by: KNOLOGY of Kentucky, Inc. d/b/a WOW! Internet, Cable and Phone
1241 O.G. Skinner Drive
West Point, Georgia 31833



INTRASTATE DOMESTIC ACCESS SERVICES

6. SPECIAL ACCESS SERVICE (Cont'd)

6.2 Description (Cont'd)

6.2.1 Voice Grade Services (Cont'd)

6.2.1.3 Optional Features and Functions (Cont'd)

G. Transfer Arrangement

A transfer arrangement affords the Customer an additional measure of flexibility in the use of an access channel(s). The arrangement can be utilized to transfer a leg of a Special Access Service to another channel that terminates in either the same or a different Customer premise. A key activated or dial-up control service is required to operate the transfer arrangement. A spare channel, if required, is not included as part of the option.

6.2.2 Digital Data Service

6.2.2.1 Basic Channel Description

A digital data channel is for duplex four (4) wire transmission of synchronous serial data at the rate of 2.4, 4.8, 9.6, 19.2, 56.0 or 64.0 Kbps. The actual bit rate is a function of the channel interface selected by the Customer. The channel provides a synchronous service with timing provided by the Telephone Company through the Company's facilities to the Customer in the received bit stream. Digital data channels are provided as either hubbed or non-hubbed services between Customer designated premise or between a Customer designated premise and a Company hub or hubs, where available.

The Customer may provide the channel service unit-type equipment or other network channel terminating equipment associated with the digital data channel at the Customer premise.

Issued: December 27, 2013

Issued by: KNOLOGY of Kentucky, Inc. d/b/a WOW! Internet, Cable and Phone
1241 O.G. Skinner Drive
West Point, Georgia 31833

KENTUCKY PUBLIC SERVICE COMMISSION
JEFF R. DEROUEN EXECUTIVE DIRECTOR
TARIFF BRANCH Effective _____, 2013 <i>Brent Kirtley</i>
12/30/2013 PURSUANT TO 807 KAR 5:011 SECTION 9 (1)

INTRASTATE DOMESTIC ACCESS SERVICES

6. SPECIAL ACCESS SERVICE (Cont'd)

6.2 Description (Cont'd)

6.2.2 Digital Data Service (Cont'd)

6.2.2.1 Basic Channel Description (Cont'd)

The Company will provide a channel capable of meeting a monthly average performance equal to or greater than 99.875% error-free seconds (if provided through a digital data hub) while the channel is in service, if it is measured through a CSU equivalent which is designed, manufactured, and maintained to conform with the specifications contained in Technical Reference PUB62310 .

6.2.2.2 Optional Features and Functions

The Optional Features and Functions described in paragraphs A. and B. following are only available where Digital Data Service is provided via a hub.

A. Central Office Bridging Capability

Bridging is not available on a 64.0 Kbps channel.

Issued: December 27, 2013

Issued by: KNOLOGY of Kentucky, Inc. d/b/a WOW! Internet, Cable and Phone
1241 O.G. Skinner Drive
West Point, Georgia 31833

KENTUCKY PUBLIC SERVICE COMMISSION
JEFF R. DEROUEN EXECUTIVE DIRECTOR
TARIFF BRANCH Effective _____, 2013 <i>Brent Kirtley</i>
12/30/2013 PURSUANT TO 807 KAR 5:011 SECTION 9 (1)

INTRASTATE DOMESTIC ACCESS SERVICES

6. SPECIAL ACCESS SERVICE (Cont'd)

6.2 Description (Cont'd)

6.2.2 Digital Data Service (Cont'd)

6.2.2.2 Optional Features and Functions (Cont'd)

B. Transfer Arrangement

A transfer arrangement affords the Customer an additional measure of protection and/or flexibility in the use of their access channel(s) on a 1xN basis. The arrangement can be utilized to transfer a leg of a Special Access Service to either a spare or working channel that terminates in either the same or a different Customer designated premise. This arrangement is only available at a Company designated hub. A key activated or dial-up control service is required to operate the transfer arrangement. A spare channel, if required, is not included as a part of the option.

6.2.3 High Capacity Service

6.2.3.1 Basic Channel Description

A high capacity channel is for the transmission of 1.544 or 44.736 Mbps isochronous serial data. The actual bit rate is a function of the channel interface selected by the Customer. High capacity channels are provided between Customer designated premise or between a Customer designated premise and a Company hub or hubs.

The Customer may provide the network channel terminating equipment associated with the high capacity channel at the Customer's premise.

Issued: December 27, 2013

Issued by: KNOLOGY of Kentucky, Inc. d/b/a WOW! Internet, Cable and Phone
1241 O.G. Skinner Drive
West Point, Georgia 31833

KENTUCKY PUBLIC SERVICE COMMISSION
JEFF R. DEROUEN EXECUTIVE DIRECTOR
TARIFF BRANCH Effective _____, 2013 <i>Brent Kirtley</i>
12/30/2013 PURSUANT TO 807 KAR 5:011 SECTION 9 (1)

INTRASTATE DOMESTIC ACCESS SERVICES

6. SPECIAL ACCESS SERVICE (Cont'd)

6.2 Description (Cont'd)

6.2.3 High Capacity Service (Cont'd)

6.2.3.1 Basic Channel Description (Cont'd)

A channel with technical specifications package HC1 will be capable of an error-free second performance of 98.75% over a continuous twenty-four (24) hour period as measured at the 1.544 Mbps rate through a CSU equivalent which is designed, manufactured, and maintained to conform with the specifications contained in Technical Reference PUB 62411.

6.2.3.2 Optional Features and Functions

A. Transfer Arrangement

An arrangement that affords the Customer an additional measure of flexibility in the use of their access channel(s). The arrangement can be utilized to transfer a leg of a Special Access Service to either a spare or working channel that terminates in either the same or a different Customer designated premise. A key activated or dial-up control service is required to operate the transfer arrangement. A spare channel, if required, is not included as part of the option.

Issued: December 27, 2013

Issued by: KNOLOGY of Kentucky, Inc. d/b/a WOW! Internet, Cable and Phone
1241 O.G. Skinner Drive
West Point, Georgia 31833

KENTUCKY PUBLIC SERVICE COMMISSION
JEFF R. DEROUEN EXECUTIVE DIRECTOR
TARIFF BRANCH Effective _____, 2013 <i>Brent Kirtley</i>
12/30/2013 PURSUANT TO 807 KAR 5:011 SECTION 9 (1)

INTRASTATE DOMESTIC ACCESS SERVICES

6. SPECIAL ACCESS SERVICE (Cont'd)

6.2 Description (Cont'd)

6.2.3 High Capacity Service (Cont'd)

6.2.3.2 Optional Features and Functions (Cont'd)

B. Central Office Multiplexing

1. DS3 to DS1

An arrangement that converts a 44.736 Mbps channel to twenty-eight (28) DS1 channels using digital time division multiplexing.

2. DS1 to Voice

An arrangement that converts a 1.544 Mbps channel to twenty-four (24) channels for use with Voice Grade Services. A channel(s) of this DS1 to the hub can also be used for a Digital Data Service.

3. DS1 to DS0

An arrangement that converts a 1.544 Mbps channel to 56/64 Kbps channel for use with Digital Data Service.

Issued: December 27, 2013

Issued by: KNOLOGY of Kentucky, Inc. d/b/a WOW! Internet, Cable and Phone
1241 O.G. Skinner Drive
West Point, Georgia 31833

KENTUCKY PUBLIC SERVICE COMMISSION
JEFF R. DEROUEN EXECUTIVE DIRECTOR
TARIFF BRANCH Effective _____, 2013 <i>Brent Kirtley</i>
12/30/2013 PURSUANT TO 807 KAR 5:011 SECTION 9 (1)

INTRASTATE DOMESTIC ACCESS SERVICES

6. SPECIAL ACCESS SERVICE (Cont'd)

6.3 Service Configurations

There are two (2) types of service configurations over which Special Access Services are provided: two (2) point and multi-point.

A. Two-Point Service

Two-Point Service connects two (2) Customer designated premise's directly or through a hub where multiplexing functions are performed, or a Customer designated premise and a WATS Serving Office.

Applicable rate elements are:

- Channel Terminations
- Channel Mileage (as applicable)
- Optional Features and Functions (when applicable)

B. Multi-Point Service

Multi-Point Service connects three (3) or more Customer designated premise's through one (1) or more Company hubs. Only certain types of Special Access Service are provided as Multi-Point Service. These are so designated in the descriptions for the appropriate channel.

The channel between hubs (i.e. bridging locations) on a Multi-Point Service is a mid-link. There is no limitation on the number of mid-links available with a Multi-Point Service. However, when more than three (3) mid-links in a tandem are provided the quality of the overall service may be degraded.

Issued: December 27, 2013

Issued by: KNOLOGY of Kentucky, Inc. d/b/a WOW! Internet, Cable and Phone
1241 O.G. Skinner Drive
West Point, Georgia 31833

KENTUCKY PUBLIC SERVICE COMMISSION
JEFF R. DEROUEN EXECUTIVE DIRECTOR
TARIFF BRANCH Effective _____, 2013 <i>Brent Kirtley</i>
12/30/2013 PURSUANT TO 807 KAR 5:011 SECTION 9 (1)

INTRASTATE DOMESTIC ACCESS SERVICES

6. SPECIAL ACCESS SERVICE (Cont'd)

6.3 Service Configurations (Cont'd)

B. Multi-Point Service (Cont'd)

Multi-Point Service utilizing a customized technical specifications package will be provided when technically possible. If the Company determines that the requested parameter specifications are not compatible, the Customer will be advised and given an opportunity to change the order. When a customized channel is ordered the Customer will be notified whether Additional Engineering Charges apply. In such cases, the Customer will be advised and given the opportunity to change the order.

When ordering, the Customer will specify the desired bridging hub(s).

- Channel Terminations (one (1) per Customer designated premise)
- Channel Mileage (as applicable between the serving wire center for each Customer designated premise and the hub and between hubs)
- Bridging
- Additional Optional Features and Functions (when applicable).

6.4 Alternate Use

Alternate Use occurs when a service is arranged by the Company so that the Customer can select different types of transmission at different times. A Customer may use a service in any privately beneficial manner. However, where technical or engineering changes are required to effectuate an alternate use, the Company will make such special arrangements available on an individual case basis.

The arrangement required to transfer the service from one operation to the other (i.e., the transfer relay and control leads) will be rated and provided on an individual case basis. The Customer will pay the stated Tariff rates for the Access Service rate elements for the service ordered [i.e., Channel Terminations, Channel Mileage (as applicable) and Optional Features and Functions (if any)].

6.5 Special Facilities Routing

The Customer may request that the facilities used to provide Special Access Service be specially routed. The regulations for Special Facilities Routing (i.e., Avoidance, Diversity) are set forth in Section 7.

Issued: December 27, 2013

Issued by: KNOLOGY of Kentucky, Inc. d/b/a WOW! Internet, Cable and Phone

1241 O.G. Skinner Drive
West Point, Georgia 31833

KENTUCKY PUBLIC SERVICE COMMISSION
JEFF R. DEROUEN EXECUTIVE DIRECTOR
TARIFF BRANCH Effective _____, 2013 <i>Brent Kirtley</i>
12/30/2013 PURSUANT TO 807 KAR 5:011 SECTION 9 (1)

INTRASTATE DOMESTIC ACCESS SERVICES

6. SPECIAL ACCESS SERVICE (Cont'd)

6.6 Design Layout Report

At the request of the Customer, the Company will provide to the Customer the make-up of the facilities and services provided under this Tariff as Special Access Service to aid the Customer in designing its overall service. This information will be provided in the form of a Design Layout Report. The Design Layout Report will be provided to the Customer at no charge, and will be reissued or updated whenever these facilities are materially changed.

6.7 Acceptance Testing

At no additional charge, the Company will, at the Customer's request, cooperatively test the following at the time of installation:

A. Voice Grade Service

For Voice Grade Service (analog) the acceptance test will include tests for loss, 3-tone slope, DC continuity, operational signaling, C-notched noise, C-message noise when these parameters are applicable and specified in the order of service. Additionally, an improved loss test will be made if the Customer has ordered the Improved Loss Optional Feature.

B. Digital Service

For Digital Services (i.e., Digital Data and High Capacity), acceptance tests will include tests applicable to the service as specified by the Customer in the order for service.

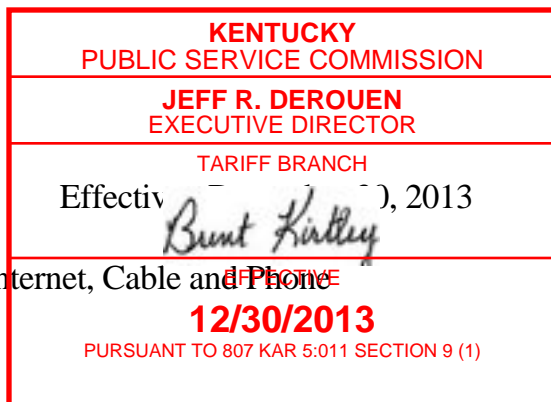
In addition to the above tests, additional cooperative acceptance testing for Voice Grade Service to test other parameters is available at the Customer's request. All test results will be made available to the Customer upon request.

6.8 Ordering Options and Conditions

Special Access Service is ordered under the Access Order provisions set forth in Section 3 preceding. Also included in that Section are other charges which may be associated with ordering Special Access Service (e.g., Service Date Change Charges, Cancellation Charges, etc.).

Issued: December 27, 2013

Issued by: KNOLOGY of Kentucky, Inc. d/b/a WOW! Internet, Cable and Phone
1241 O.G. Skinner Drive
West Point, Georgia 31833



INTRASTATE DOMESTIC ACCESS SERVICES

6. SPECIAL ACCESS SERVICE (Cont'd)

6.9 Rate Regulations

This Section contains the specific regulations governing the rates and charges applicable to Special Access Service.

6.9.1 Rate Categories

There are three basic rate categories which apply to Special Access Service:

- Channel Termination
- Channel Mileage
- Optional Features and Functions

A. Channel Termination

The Channel Termination rate category recovers the costs associated with the communications path between a Customer designated premise and the serving wire center of that premise. Included as part of the Channel Termination is a standard channel interface arrangement which defines the technical characteristics associated with the type of facilities to which the access service is to be connected at the Point of Termination (POT) and the type of signaling capability, if any. The signaling capability is provided as an optional feature as set forth in paragraph (C) following. One Channel Termination charge applies per Customer designated premise at which the channel is terminated. This charge will apply even if the Customer designated premise and the serving wire center are collocated in a Company building.

For DS3 High Capacity Service, the Channel Termination rates are made up of the DS3 Capacity Interface rate and the DS3 Channel Installed rate. The Capacity Interface rate is dependent upon the capacity ordered (i.e., Capacity Interface of 1, 3, 6 or 12) and is applicable at each Customer designated premise. The capacity ordered is the maximum number of DS3 services that can be terminated on a given service at the Customer designated premise (e.g., a capacity of 3 can terminate 1, 2, or 3 DS3 services). One DS3 Channel Installed rate applies per Customer designated premise at which the channel is terminated for each DS3 channel that is ordered. These charges will apply even if the Customer designated premise and the serving wire center are collocated in a Company building.

Issued: December 27, 2013

Issued by: KNOLOGY of Kentucky, Inc. d/b/a WOW! Internet, Cable and Phone
1241 O.G. Skinner Drive
West Point, Georgia 31833

KENTUCKY PUBLIC SERVICE COMMISSION
JEFF R. DEROUEN EXECUTIVE DIRECTOR
TARIFF BRANCH Effective _____, 2013 <i>Brent Kirtley</i>
12/30/2013 PURSUANT TO 807 KAR 5:011 SECTION 9 (1)

INTRASTATE DOMESTIC ACCESS SERVICES

6. SPECIAL ACCESS SERVICE (Cont'd)

6.9 Rate Regulations (Cont'd)

6.9.1 Rate Categories (Cont'd)

B. Channel Mileage

The Channel Mileage rate category recovers the costs associated with the end office equipment and the transmission facilities between the serving wire centers associated with two (2) Customer designated premises, between a serving wire center associated with a Customer designated premise and a Company hub or between two (2) Company hubs. Channel Mileage rates are made up of the Channel Mileage Facility rate and the Channel Mileage Termination rate.

1. Channel Mileage Facility

The Channel Mileage Facility rate recovers the per mile cost for the transmission path which extends between the Company serving wire centers and/or hub(s).

2. Channel Mileage Termination

The Channel Mileage Termination rate recovers the cost for end office equipment associated with terminating the facility (i.e., basic circuit equipment and terminations at serving wire centers and hubs). The Channel Mileage Termination rate will apply at the serving wire center(s) for each Customer designated premise and Company hub where the channel is terminated. If the Channel Mileage is between bridging hubs, the Channel Mileage Termination rate will apply per Company designated hub. If the Channel Mileage is between the serving wire center for a Customer designated premise and a WATS Serving Office, the Channel Mileage Termination rate will apply at both the serving wire center associated with the Customer designated premise and the WATS Serving Office. When the Channel Mileage Facility is zero (0) (i.e., collocated serving wire centers), neither the Channel Mileage Facility rate nor the Channel Mileage Termination rate will apply.

Issued: December 27, 2013

Issued by: KNOLOGY of Kentucky, Inc. d/b/a WOW! Internet, Cable and Phone

1241 O.G. Skinner Drive
West Point, Georgia 31833

KENTUCKY PUBLIC SERVICE COMMISSION
JEFF R. DEROUEN EXECUTIVE DIRECTOR
TARIFF BRANCH Effective _____, 2013 <i>Brent Kirtley</i>
12/30/2013 PURSUANT TO 807 KAR 5:011 SECTION 9 (1)

INTRASTATE DOMESTIC ACCESS SERVICES

6. SPECIAL ACCESS SERVICE (Cont'd)

6.9 Rate Regulations (Cont'd)

6.9.1 Rate Categories (Cont'd)

C. Optional Features and Functions

The Optional Features and Functions rate category recovers the costs associated with optional features and functions which may be added to a Special Access Service to improve its quality or utility to meet specific communications requirements. These are not necessarily identifiable with specific equipment, but rather represent the end result in terms of performance characteristics that may be obtained. These characteristics may be obtained by using various combinations of equipment. Although the equipment necessary to perform a specified function may be installed at various locations along the path of the service, they will be charged for as a single rate element.

Examples of Optional Features and Functions that are available include, but are not limited to, the following:

- Signaling Capability
- Hubbing Functions
- Conditioning
- Transfer Arrangements

Issued: December 27, 2013

Issued by: KNOLOGY of Kentucky, Inc. d/b/a WOW! Internet, Cable and Phone
1241 O.G. Skinner Drive
West Point, Georgia 31833

KENTUCKY PUBLIC SERVICE COMMISSION
JEFF R. DEROUEN EXECUTIVE DIRECTOR
TARIFF BRANCH Effective _____, 2013 <i>Brent Kirtley</i>
12/30/2013 PURSUANT TO 807 KAR 5:011 SECTION 9 (1)

INTRASTATE DOMESTIC ACCESS SERVICES

6. SPECIAL ACCESS SERVICE (Cont'd)

6.9 Rate Regulations (Cont'd)

6.9.1 Rate Categories (Cont'd)

Descriptions for each of the available Optional Features and Functions are set forth in Section 6.2 preceding.

A hub is a Company designated serving wire center at which bridging or multiplexing functions are performed. The bridging functions performed are to connect three (3) or more Customer designated premise's in a multi-point arrangement. The multiplexing functions are to channelize digital facilities to individual services requiring a lower capacity or bandwidth

6.9.2 Types of Rates and Charges

There are three (3) types of rates and charges. These are monthly rates, daily rates and non-recurring charges. The rates and charges are described as follows:

A. Monthly Rates

Monthly rates are recurring rates that apply each month.

B. Non-recurring Charges

Non-recurring charges are one (1) time charges that apply for specific work activity (i.e., installation or change to an existing service). The types of non-recurring charges that apply for Special Access Service are: installation of service, installation of optional features and functions, and service rearrangements. These charges are in addition to the Access Order Charge.

Issued: December 27, 2013

Issued by: KNOLOGY of Kentucky, Inc. d/b/a WOW! Internet, Cable and Phone
1241 O.G. Skinner Drive
West Point, Georgia 31833

KENTUCKY PUBLIC SERVICE COMMISSION
JEFF R. DEROUEN EXECUTIVE DIRECTOR
TARIFF BRANCH Effective _____, 2013 <i>Brent Kirtley</i>
12/30/2013 PURSUANT TO 807 KAR 5:011 SECTION 9 (1)

INTRASTATE DOMESTIC ACCESS SERVICES

6. SPECIAL ACCESS SERVICE (Cont'd)

6.9 Rate Regulations (Cont'd)

6.9.2 Types of Rates and Charges (Cont'd)

B. Non-recurring Charges (Cont'd)

1. Installation of Service

Non-recurring charges apply to each service installed. The non-recurring charges for the installation of service are set for each channel type as a non-recurring charge for the Channel Termination.

2. Installation of Optional Features and Functions

When optional features and functions are installed coincident with the initial installation of service, no separate non-recurring charge is applicable. When optional features and functions are installed or changed subsequent to the installation of service, an Access Order Charge will apply per order.

Issued: December 27, 2013

Issued by: KNOLOGY of Kentucky, Inc. d/b/a WOW! Internet, Cable and Phone
1241 O.G. Skinner Drive
West Point, Georgia 31833

KENTUCKY PUBLIC SERVICE COMMISSION
JEFF R. DEROUEN EXECUTIVE DIRECTOR
TARIFF BRANCH Effective _____, 2013 <i>Brent Kirtley</i>
12/30/2013 PURSUANT TO 807 KAR 5:011 SECTION 9 (1)

INTRASTATE DOMESTIC ACCESS SERVICES

6. SPECIAL ACCESS SERVICE (Cont'd)

6.9 Rate Regulations (Cont'd)

6.9.2 Types of Rates and Charges (Cont'd)

B. Non-recurring Charges (Cont'd)

3. Service Rearrangements

Service rearrangements are changes to existing (installed) services which may be administrative only in nature, as set forth following, or that involve actual physical change to the service. Changes to pending orders are set forth in Section 3.4 preceding.

Changes in the type of service or channel termination which result in a change of the minimum period requirement will be treated as a discontinuance of the service and an installation of a new service.

Changes in ownership or transfer of responsibility from one (1) Customer to another will be treated as a discontinuance of the service and an installation of a new service. In the event the change in ownership or transfer of responsibility is as set forth in Section 2.1.9 preceding where there is no change in facilities or arrangements, the change will be treated as an administrative change.

Issued: December 27, 2013

Issued by: KNOLOGY of Kentucky, Inc. d/b/a WOW! Internet, Cable and Phone
1241 O.G. Skinner Drive
West Point, Georgia 31833



INTRASTATE DOMESTIC ACCESS SERVICES

6. SPECIAL ACCESS SERVICE (Cont'd)

6.9 Regulations (Cont'd)

6.9.2 Types of Rates and Charges (Cont'd)

B. Non-recurring Charges (Cont'd)

4. Administrative Changes

Administrative changes will be made without charge(s) to the Customer.
Administrative changes are as follows:

- Change of Customer name;
- Change of Customer or Customer's end user premise address when the change of address is not a result of physical relocation of equipment;
- Change in billing data (name, address, or contact name or telephone number);
- Change of agency authorization;
- Change of Customer circuit identification;
- Change of billing account number;
- Change of Customer test line number;
- Change of Customer or Customer's end user contact name or telephone number; and
- Change of jurisdiction.

All other service rearrangements will be charged as follows:

- If the change involves the addition of other Customer designated premise to an existing service, the non-recurring charge for the Channel Termination rate element will apply. The charge(s) will apply only for the location(s) being added. The charge(s) will be in addition to an Access Order Charge.

6.9.3 Moves

A move involves a change in the physical location of one (1) of the following:

- The Point of Termination at the Customer's premise; or
- The Customer's premise

The charges for the move are dependent on whether the move is to a new location within the same building or to a different building.

Issued: December 27, 2013

Issued by: KNOLOGY of Kentucky, Inc. d/b/a WOW! Internet, Cable and Phone

1241 O.G. Skinner Drive
West Point, Georgia 31833

KENTUCKY PUBLIC SERVICE COMMISSION
JEFF R. DEROUEN EXECUTIVE DIRECTOR
TARIFF BRANCH Effective _____, 2013 <i>Brent Kirtley</i>
12/30/2013 PURSUANT TO 807 KAR 5:011 SECTION 9 (1)

INTRASTATE DOMESTIC ACCESS SERVICES

6. SPECIAL ACCESS SERVICE (Cont'd)

6.9 Rate Regulations (Cont'd)

6.9.3 Moves (Cont'd)

A. Moves Within the Same Building

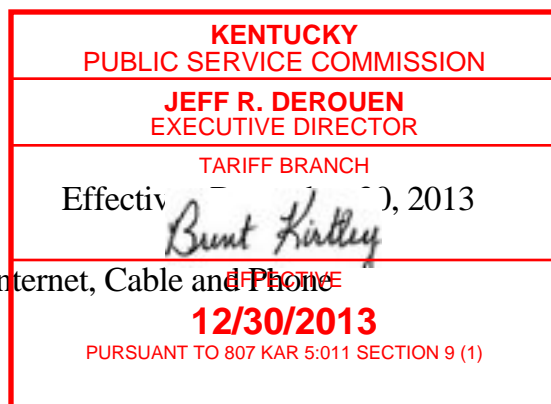
When the move is to a new location within the same building, the charge for the move will be an amount equal to one half of the non-recurring (i.e., installation) charge for the service termination affected. There will be no change in the minimum period requirements. This charge is in addition to the Access Order Charge.

B. Moves To a Different Building

Moves to a different building will be treated as a discontinuance and start of service and all associated non-recurring charges will apply. New minimum period requirements will be established for the new services. The Customer will also remain responsible for satisfying all outstanding minimum period charges for the discontinued service.

Issued: December 27, 2013

Issued by: KNOLOGY of Kentucky, Inc. d/b/a WOW! Internet, Cable and Phone
1241 O.G. Skinner Drive
West Point, Georgia 31833



INTRASTATE DOMESTIC ACCESS SERVICES

6. SPECIAL ACCESS SERVICE (Cont'd)

6.9 Rate Regulations (Cont'd)

6.9.4 Mileage Measurement

Special Access will be billed to Customers under two (2) options. The first option is where the Company will provision and provide a special access circuit from end to end and will bill all mileage at Company's Access Charge rates. The second option is where the Company will only provision the portion of the special access circuit that uses Company facilities. In this case, the Customer would be required to obtain the other portion of special access circuit from the other Company (ies) needed to provision the required services. The applicable mileage option will be the Company's discretion for each special access circuit ordered.

Option I: Company provided and provisioned special access circuit from end to end:

The mileage used to determine the monthly Channel Mileage Facility rate is calculated on the airline distance between the locations involved, i.e.,

- the serving wire centers associated with two (2) Customer designated premise's,
- a serving wire center associated with a Customer designated premise and a hub,
- two (2) hubs
- or between the serving wire center associated with a Customer designated premise and a WATS Serving Office.

Issued: December 27, 2013

Issued by: KNOLOGY of Kentucky, Inc. d/b/a WOW! Internet, Cable and Phone

1241 O.G. Skinner Drive
West Point, Georgia 31833

KENTUCKY PUBLIC SERVICE COMMISSION
JEFF R. DEROUEN EXECUTIVE DIRECTOR
TARIFF BRANCH Effective _____, 2013 <i>Brent Kirtley</i>
12/30/2013 PURSUANT TO 807 KAR 5:011 SECTION 9 (1)

INTRASTATE DOMESTIC ACCESS SERVICES

6. SPECIAL ACCESS SERVICE (Cont'd)

6.9 Rate Regulations (Cont'd)

6.9.4 Mileage Measurements (Cont'd)

The serving wire center associated with a Customer designated premise is the serving wire center from which this Customer designated premise would normally obtain dial tone.

Mileage Charges are shown with each channel type. To determine Mileage Charges first compute the airline mileage using the vertical (V) and horizontal (H) coordinates method as follows:

- Obtain the "V" and "H" coordinates for each city.
- Obtain the difference between the "V" coordinates and the "H" coordinates.
- Square each difference obtained in the step above.
- Add the squares of the "V" and "H" differences.
- Divide the number obtained above by ten (10).
- Obtain the square root of the whole number from the step above. This is the airline mileage.

Multiply the resulting airline miles times the Channel Mileage Facility per mile rate, and add the Channel Mileage Termination rate for each termination (where calculations result in a fraction of a mile, always round up to the next whole mile before determining the mileage and applying the rates).

When hubs are involved, mileage is computed and rates applied separately for each section, i.e.,

- Customer designated premise serving wire center to hub,
- hub to hub and/or
- hub to Customer designated premise serving wire center.

However, when any service is routed through a hub for purposes other than Customer specified bridging or multiplexing (e.g., the Company chooses to so route for test access purposes), rates will be applied only to the distance calculated between the serving wire centers associated with the Customer designated premise.

Issued: December 27, 2013

Issued by: KNOLOGY of Kentucky, Inc. d/b/a WOW! Internet, Cable and Phone
1241 O.G. Skinner Drive
West Point, Georgia 31833

KENTUCKY PUBLIC SERVICE COMMISSION
JEFF R. DEROUEN EXECUTIVE DIRECTOR
TARIFF BRANCH Effective _____, 2013 <i>Brent Kirtley</i>
12/30/2013 PURSUANT TO 807 KAR 5:011 SECTION 9 (1)

INTRASTATE DOMESTIC ACCESS SERVICES

6. SPECIAL ACCESS SERVICE (Cont'd)

6.10 Mixed Use Analog and Digital High Capacity Services

Mixed use refers to a rate application applicable only when the Customer orders high capacity special access facilities between a Customer designated premise and a Company hub where the Company performs multiplexing/de-multiplexing functions and the same Customer then orders the derived channels as Special and Switched Access Services. If the Customer has Switched Access Service between a Customer designated premise and an end office that is multiplexed at a Company hub and subsequently orders the derived channels as Special and Switched Access Service, rates and charges will apply as if the service were ordered as mixed use.

Except as noted above, the high capacity facility will be ordered, provided and rated as Special Access Service (i.e., Channel Termination, Channel Mileage, as appropriate, and Multiplexing Arrangement). The non-recurring charge that applies when the mixed use facility is installed will be the non-recurring charge associated with the appropriate special access high capacity channel termination. Rating as special access will continue until such time as the Customer chooses to use a portion of the available capacity for Switched Access Service. Individual service (i.e., Switched or Special Access) non-recurring charges will not apply to the individual channels of the mixed use facility.

When Special Access Service is provided utilizing a channel of the mixed use facility to a hub, high capacity rates and charges will apply for the facility to the hub, as set forth preceding, and individual service rates and charges will apply from the hub to the Customer designated premise. The rates and charges that will apply to the portion from the hub to the Customer designated premise will be dependent on the specific type of Special Access Service that is provided (e.g., Voice Grade, etc.). The applicable rates and charges will include a channel termination and channel mileage, if applicable. Rates and charges for optional features and functions associated with the service, if any, will apply for the appropriate channel type.

Issued: December 27, 2013

Issued by: KNOLOGY of Kentucky, Inc. d/b/a WOW! Internet, Cable and Phone
1241 O.G. Skinner Drive
West Point, Georgia 31833

KENTUCKY PUBLIC SERVICE COMMISSION
JEFF R. DEROUEN EXECUTIVE DIRECTOR
TARIFF BRANCH Effective _____, 2013 <i>Brent Kirtley</i>
12/30/2013 PURSUANT TO 807 KAR 5:011 SECTION 9 (1)

INTRASTATE DOMESTIC ACCESS SERVICES

6. SPECIAL ACCESS SERVICE (Cont'd)

6.10 Mixed Use Analog and Digital High Capacity Services (Cont'd)

As each individual channel is activated for Switched Access Service, the High Capacity Special Access Channel Termination, Channel Mileage, and Multiplexing rates will be reduced accordingly (e.g., 1/24th for a DS1 service, 1/672nd for a DS3 service, etc.). Switched Access Service rates and charges will apply for each channel that is used to provide a Switched Access Service. Additionally, the Switched Access Service Entrance Facility, Direct Trunked Transport, and Multiplexing charges, if applicable, will be reduced by multiplying their respective rates by the ratio of derived Switched Access Service channels to the total number of voice grade channels that can be derived.

The Customer must place an order for each individual Switched or Special Access Service utilizing the mixed use facilities and specify the channel assignment for each such service.

6.11 Individual Case Basis Arrangements

Certain services set forth in Special Access Service, Section 6. are provided on an Individual Case Basis.

Issued: December 27, 2013

Issued by: KNOLOGY of Kentucky, Inc. d/b/a WOW! Internet, Cable and Phone
1241 O.G. Skinner Drive
West Point, Georgia 31833

KENTUCKY PUBLIC SERVICE COMMISSION
JEFF R. DEROUEN EXECUTIVE DIRECTOR
TARIFF BRANCH Effective _____, 2013 <i>Brent Kirtley</i>
12/30/2013 PURSUANT TO 807 KAR 5:011 SECTION 9 (1)

INTRASTATE DOMESTIC ACCESS SERVICES

7. SPECIAL FACILITIES ROUTING OF ACCESS SERVICE

7.1 Description

The services provided under this Tariff are provided over such routes and facilities as the Company may elect. Special Facilities Routing is involved when, in order to comply with requirements specified by the Customer, the Company provides Switched Access Service, Special Access Service in a manner which includes one (1) or more of the following conditions:

7.1.1 Diversity

Two (2) or more circuits must be provided over not more than two (2) different physical routes.

7.1.2 Avoidance

A circuit(s) must be provided on a route which avoids specified geographical locations.

7.1.3 Diversity and Avoidance Combined

Diversity and Avoidance may be provided in combination, subject to Company limitations and availability.

Issued: December 27, 2013

Issued by: KNOLOGY of Kentucky, Inc. d/b/a WOW! Internet, Cable and Phone
1241 O.G. Skinner Drive
West Point, Georgia 31833



INTRASTATE DOMESTIC ACCESS SERVICES

8. SPECIALIZED SERVICE OR ARRANGEMENTS

8.1 General

Specialized Service or Arrangements may be provided by the Company, at the request of a Customer, on an individual case basis if such service or arrangements meet the following criteria:

- The requested service or arrangements are not offered under other Sections of this Tariff.
- The facilities utilized to provide the requested service or arrangements are of a type normally used by the Company in furnishing its other services.
- The requested service or arrangements are compatible with other Company services, facilities, and its engineering and maintenance practices.
- This offering is subject to the availability of the necessary Company personnel and capital resources.

Rates and charges and additional regulations if applicable, for Specialized Service or Arrangements are provided on an individual case basis.

Issued: December 27, 2013

Issued by: KNOLOGY of Kentucky, Inc. d/b/a WOW! Internet, Cable and Phone
1241 O.G. Skinner Drive
West Point, Georgia 31833

KENTUCKY PUBLIC SERVICE COMMISSION
JEFF R. DEROUEN EXECUTIVE DIRECTOR
TARIFF BRANCH Effective _____, 2013 <i>Brent Kirtley</i>
12/30/2013 PURSUANT TO 807 KAR 5:011 SECTION 9 (1)

INTRASTATE DOMESTIC ACCESS SERVICES

9. ADDITIONAL ENGINEERING, ADDITIONAL LABOR AND MISCELLANEOUS SERVICES

In this Section, normally scheduled working hours are an employee's scheduled work period in any given calendar day (e.g., 8:00 a.m. to 5:00 p.m.) for the application of rates based on working hours.

A Miscellaneous Service Order Charge as described in previous Sections may be applicable to services ordered from this Section.

9.1 Additional Engineering

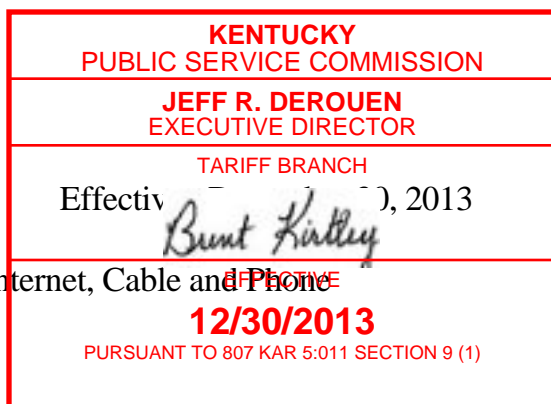
Additional Engineering, including engineering reviews will be undertaken only after the Company has notified the Customer that Additional Engineering Charges apply, and the Customer agrees to such charges.

Additional engineering will be provided by the Company at the request of the Customer only when:

- A. A Customer requests additional technical information after the Company has already provided the technical information normally included on the Design Layout Report (DLR).
- B. Additional engineering time is incurred by the Company to engineer a Customer's request for a customized service.
- C. A Customer requested design change requires the expenditure of additional engineering time. Such additional engineering time is incurred by the Company for the engineering review as set forth in Section 3.4.3 preceding. The charge for additional engineering time relating to the engineering review, which is undertaken to determine if a design change is indeed required, will apply whether or not the Customer authorizes the Company to proceed with the design change. In this case the Design Change Charge does not apply unless the Customer authorizes the Company to proceed with the design change.

Issued: December 27, 2013

Issued by: KNOLOGY of Kentucky, Inc. d/b/a WOW! Internet, Cable and Phone
1241 O.G. Skinner Drive
West Point, Georgia 31833



INTRASTATE DOMESTIC ACCESS SERVICES

9. ADDITIONAL ENGINEERING, ADDITIONAL LABOR AND MISCELLANEOUS SERVICES (Cont'd)

9.2 Additional Labor

Additional labor is that labor requested by the Customer on a given service and agreed to by the Company as set forth in Sections 9.2.1 through 9.2.5 following. The Company will notify the customer that Additional Labor Charges will apply before any additional labor is undertaken. Should a Company employee be called out at a time not consecutive with the employee's scheduled work period the Customer will be subject to a minimum charge of four (4) hours. When provisioning or restoring Telecommunications Service Priority Services, the Company will, when possible, notify the Customer of the applicability of these Additional Labor Charges.

9.2.1 Overtime Installation

Overtime installation is that Company installation effort outside of normally scheduled working hours.

9.2.2 Overtime Repair

Overtime repair is that Company effort performed outside of normally scheduled working hours.

9.2.3 Stand by

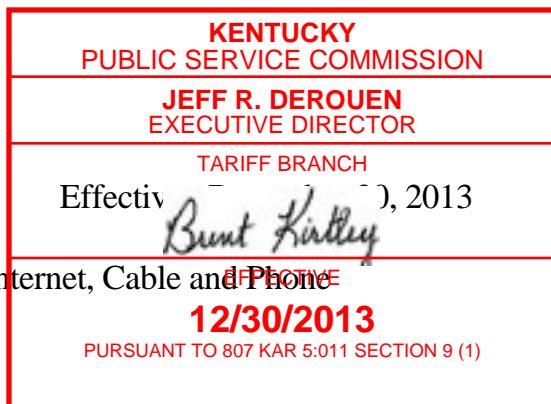
Stand by includes all time in excess of one-half (1/2) hour during which Company personnel stand by to make installation acceptance tests or cooperative tests with a Customer to verify facility repair on a given service.

9.2.4 Testing and Maintenance with Other Companies

Additional testing, maintenance or repair of facilities which connect other Telephone Companies is that which is in addition to the normal effort required to test, maintain or repair facilities provided solely by the Company.

Issued: December 27, 2013

Issued by: KNOLOGY of Kentucky, Inc. d/b/a WOW! Internet, Cable and Phone
1241 O.G. Skinner Drive
West Point, Georgia 31833



INTRASTATE DOMESTIC ACCESS SERVICES

9. ADDITIONAL ENGINEERING, ADDITIONAL LABOR AND MISCELLANEOUS SERVICES (Cont'd)

9.2 Additional Labor (Cont'd)

9.2.5 Other Labor

Other labor is that additional labor not included in Sections 9.2.1 through 9.2.4 preceding and labor incurred to accommodate a specific Customer request that involves only labor which is not covered by any other Section of this Tariff.

9.3 Miscellaneous Services

9.3.1 Testing Services

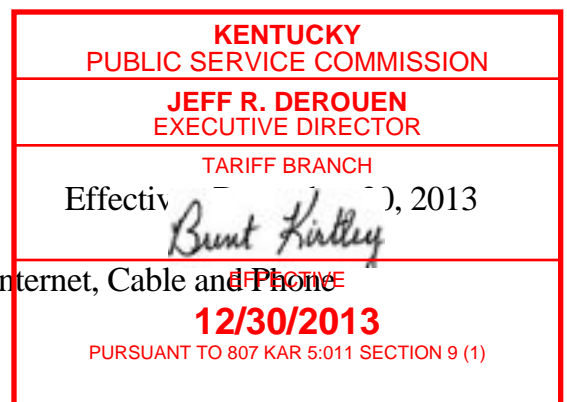
Testing Services offered under this Section of the Tariff are optional and subject to rates and charges as set forth in Section 16. Should a Company employee be called out at a time not consecutive with the employee's scheduled work period the Customer is subject to a minimum charge of four (4) hours. Other testing services, as described in Sections 5.2.2 and 6.7 preceding, are provided by the Company in association with Access Services and are furnished at no additional charge.

Testing Services are normally provided by Company personnel at Company locations. However, provisions are made in paragraph B.2. following for a Customer to request Company personnel to perform Testing Services at the Customer designated premise.

The offering of Testing Services under this Section of the Tariff is made subject to the availability of the necessary qualified personnel and test equipment at the various test locations mentioned in paragraphs A. and B. following.

Issued: December 27, 2013

Issued by: KNOLOGY of Kentucky, Inc. d/b/a WOW! Internet, Cable and Phone
1241 O.G. Skinner Drive
West Point, Georgia 31833



INTRASTATE DOMESTIC ACCESS SERVICES

9. ADDITIONAL ENGINEERING, ADDITIONAL LABOR AND MISCELLANEOUS SERVICES (Cont'd)

9.3 Miscellaneous Services (Cont'd)

9.3.1 Testing Services (Cont'd)

Switched Access Service

Testing Services for Switched Access Service are comprised of (a) tests which are performed during the installation of Switched Access Service, i.e., acceptance tests, (b) tests which are performed after Customer acceptance of such access services and which are without charge i.e., routine testing and (c) additional tests which are performed during or after Customer acceptance of such Switched Access Services and for which additional charges apply, i.e., additional cooperative acceptance tests and in-service tests.

Routine tests are those tests performed by the Company on a regular basis, as set forth in Section 5.2.2 preceding which are required to maintain Switched Access Service. Additional in-service tests may be done on an automatic basis (no Company or Customer technicians involved), on a manual basis (Company technician(s) involved at Company office(s) and Company or Customer technician(s) involved at the Customer designated premise).

Testing Services are ordered to the end office for FGD. Testing Services for Directory Assistance Service not routed through an access tandem is ordered to a Directory Assistance Location for each NPA.

Issued: December 27, 2013

Issued by: KNOLOGY of Kentucky, Inc. d/b/a WOW! Internet, Cable and Phone
1241 O.G. Skinner Drive
West Point, Georgia 31833

KENTUCKY PUBLIC SERVICE COMMISSION
JEFF R. DEROUEN EXECUTIVE DIRECTOR
TARIFF BRANCH Effective _____, 2013 <i>Brent Kirtley</i>
12/30/2013 PURSUANT TO 807 KAR 5:011 SECTION 9 (1)

INTRASTATE DOMESTIC ACCESS SERVICES

9. ADDITIONAL ENGINEERING, ADDITIONAL LABOR AND MISCELLANEOUS SERVICES (Cont'd)

9.3 Miscellaneous Services (Cont'd)

9.3.1 Testing Services (Cont'd)

Switched Access Service (Cont'd)

A. Additional Cooperative Acceptance Testing

Additional cooperative acceptance testing of Switched Access Service involves the Company provision of a technician at its office(s) and the Customer provision of a technician at its premise, with suitable test equipment to perform the required tests.

Additional cooperative acceptance tests may, for example, consist of the following tests:

- Impulse Noise
- Phase Jitter
- Signal to C-Notched Noise Ratio
- Intermodulation (Nonlinear) Distortion
- Frequency Shift (Offset)
- Envelope Delay Distortion
- Dial Pulse Percent Break

B. Additional Automatic Testing

Additional automatic testing of Switched Access Services is a testing where the Customer provides remote office test lines and 105 test lines with associated responders or their functional equivalent. The Customer may order, at additional charges, gain-slope and C-notched noise testing and may order the routine tests (1004 Hz loss, C-Message Noise and Balance) on an as needed or more than routine schedule.

The Company will provide a report that lists the test results for each trunk tested. Trunk test failures requiring Customer participation for trouble resolution will be provided to the Customer on a per occurrence basis.

The additional tests, (i.e., gain slope, C- notched noise, 1004 Hz loss, C message noise and balance) may be ordered by the Customer at additional charges, sixty (60) days prior to the start of the Customer prescribed schedule.

Issued: December 27, 2013

Issued by: KNOLOGY of Kentucky, Inc. d/b/a WOW! Internet, Cable and Phone
1241 O.G. Skinner Drive
West Point, Georgia 31833

KENTUCKY PUBLIC SERVICE COMMISSION
JEFF R. DEROUEN EXECUTIVE DIRECTOR
TARIFF BRANCH Effective _____, 2013 <i>Brent Kirtley</i>
12/30/2013 PURSUANT TO 807 KAR 5:011 SECTION 9 (1)

INTRASTATE DOMESTIC ACCESS SERVICES

9. ADDITIONAL ENGINEERING, ADDITIONAL LABOR AND MISCELLANEOUS SERVICES (Cont'd)

9.3 Miscellaneous Services (Cont'd)

9.3.1 Testing Services (Cont'd)

Switched Access Service (Cont'd)

C. Additional Manual Testing

Additional manual testing of Switched Access Services (FGD and Directory Access Service not routed through an access tandem), is testing where the Company provides a technician at its office(s) and the Company or Customer provides a technician at the Customer designated premise, with suitable test equipment to perform the required tests. Such additional tests will normally consist of gain-slope and C-notched noise testing. However, the Company will conduct any additional tests the Customer may request.

The Company will provide a report listing the test results for each trunk tested. Trunk test failures requiring Customer participation for trouble resolution will be provided to the Customer on a per occurrence basis.

Additional manual tests may be ordered by the Customer at additional charges, sixty (60) days prior to the start of the testing schedule as mutually agreed to by the Customer and the Company.

D. Obligations of the Customer

1. The Customer shall provide the remote office test line priming data to the Company, as appropriate, to support routine testing as set forth in Section 5.2.2 B. preceding.
2. The Customer shall make the facilities to be tested available to the Company at times mutually agreed upon.

E. Special Access Service

The Company will provide assistance in performing specific tests requested by the Customer.

Issued: December 27, 2013

Issued by: KNOLOGY of Kentucky, Inc. d/b/a WOW! Internet, Cable and Phone

1241 O.G. Skinner Drive
West Point, Georgia 31833

KENTUCKY PUBLIC SERVICE COMMISSION
JEFF R. DEROUEN EXECUTIVE DIRECTOR
TARIFF BRANCH Effective _____, 2013 <i>Brent Kirtley</i>
12/30/2013 PURSUANT TO 807 KAR 5:011 SECTION 9 (1)

INTRASTATE DOMESTIC ACCESS SERVICES

9. ADDITIONAL ENGINEERING, ADDITIONAL LABOR AND MISCELLANEOUS SERVICES (Cont'd)

9.3 Miscellaneous Services (Cont'd)

9.3.2 Maintenance of Service

Should a Customer report trouble to the Company for clearance and no trouble is found in the Company's facilities, the Customer shall be responsible for payment of the Maintenance of Service Charge for the period of time from when Company personnel are dispatched, at the request of the Customer, to the Customer designated premise to when the work is completed. Failure of Company personnel to find trouble in Company facilities will result in no charge if the trouble is actually in those facilities, but not discovered at the time.

Issued: December 27, 2013

Issued by: KNOLOGY of Kentucky, Inc. d/b/a WOW! Internet, Cable and Phone
1241 O.G. Skinner Drive
West Point, Georgia 31833

KENTUCKY PUBLIC SERVICE COMMISSION
JEFF R. DEROUEN EXECUTIVE DIRECTOR
TARIFF BRANCH Effective <i>Brent Kirtley</i> , 2013
12/30/2013 PURSUANT TO 807 KAR 5:011 SECTION 9 (1)

INTRASTATE DOMESTIC ACCESS SERVICES

9. ADDITIONAL ENGINEERING, ADDITIONAL LABOR AND MISCELLANEOUS SERVICES (Cont'd)

9.3 Miscellaneous Services (Cont'd)

9.3.2 Maintenance of Service (Cont'd)

The Customer shall be responsible for payment of the Maintenance of Service Charge when the Company dispatches personnel to the Customer designated premise, and the trouble is in equipment or communications systems provided by other than the Company or in detariffed Customer premise equipment provided by the Company.

No credit allowance will be applicable for the interruption involved if the Maintenance of Service Charge applies.

9.3.3 Telecommunications Service Priority - TSP

Priority installation and/or restoration of National Security Emergency Preparedness (NSEP) Telecommunications Services shall be provided in accordance with Part 64.401, Appendix A, of the Federal Communications Commission's (FCC's) Rules and Regulations.

In addition, TSP System Service shall be provided in accordance with the guidelines set forth in "Telecommunications Service Priority (TSP) System for National Security Emergency Preparedness (NSEP) Service Vendor Handbook" (NCSH 3-1-2) dated July 9, 1990, and "Telecommunications Service Priority System for National Security Emergency Preparedness Service User Manual" (NCSM 3-1-1).

Issued: December 27, 2013

Issued by: KNOLOGY of Kentucky, Inc. d/b/a WOW! Internet, Cable and Phone
1241 O.G. Skinner Drive
West Point, Georgia 31833

KENTUCKY PUBLIC SERVICE COMMISSION
JEFF R. DEROUEN EXECUTIVE DIRECTOR
TARIFF BRANCH Effective _____, 2013 <i>Brent Kirtley</i>
12/30/2013 PURSUANT TO 807 KAR 5:011 SECTION 9 (1)

INTRASTATE DOMESTIC ACCESS SERVICES

9. ADDITIONAL ENGINEERING, ADDITIONAL LABOR AND MISCELLANEOUS SERVICES (Cont'd)

9.3 Miscellaneous Services (Cont'd)

9.3.3 Telecommunications Service Priority - TSP (Cont'd)

The TSP System is a service, developed to meet the requirements of the Federal Government, as specified in the Service Vendor's Handbook and Service User's Manual which provides the regulatory, administrative and operational framework for the priority installation and/or restoration of NSEP telecommunications services. These include both Switched and Special Access Services. The TSP System applies only to NSEP Telecommunications Services, and requires and authorizes priority action by the Company providing such services.

For Switched Access Service, the TSP System's applicability is limited to those services the Company can discreetly identify for priority provisioning and/or restoration.

A Telecommunications Service Priority Charge applies when a request to provide or change a Telecommunications Service Priority is received subsequent to the issuance of an access order to install the service.

Additionally, a Miscellaneous Service Order Charge will apply to Telecommunications Service Priority requests that are ordered subsequent to the initial installation of the associated access service.

A Telecommunications Service Priority Charge does not apply when a Telecommunications Service Priority is discontinued or when ordered coincident with an access order to install or change service.

In addition, Additional Labor rates may be applicable when provisioning or restoring Switched or Special Access Services with Telecommunications Service Priority.

When the Customer requests an audit or a reconciliation of the Company's Telecommunications Service Priority records, a Miscellaneous Service Order Charge and Additional Labor rates are applicable.

Issued: December 27, 2013

Issued by: KNOLOGY of Kentucky, Inc. d/b/a WOW! Internet, Cable and Phone
1241 O.G. Skinner Drive
West Point, Georgia 31833

KENTUCKY PUBLIC SERVICE COMMISSION
JEFF R. DEROUEN EXECUTIVE DIRECTOR
TARIFF BRANCH Effective _____, 2013 <i>Brent Kirtley</i>
12/30/2013 PURSUANT TO 807 KAR 5:011 SECTION 9 (1)

INTRASTATE DOMESTIC ACCESS SERVICES

9. ADDITIONAL ENGINEERING, ADDITIONAL LABOR AND MISCELLANEOUS SERVICES (Cont'd)

9.4 Miscellaneous Services (Cont'd)

9.4.3 Billing Name and Address (BNA) Service

Billing Name and Address service is the provision by the Company, to an intrastate or interstate service provider who is a customer of the Company, of the complete billing name, street address, city or town, state and zip code for a telephone number. The service is offered to an intrastate or interstate service provider who is an interexchange carrier, an operator service provider, an enhanced service provider or any provider of telecommunications services. BNA service is supplied only to allow customers to bill their end users for telephone services they provide. BNA information may not be resold or used for any other purpose including, but not limited to, marketing or merchandising activities. BNA information shall be treated as confidential by the customer.

BNA information will be provided for listed/published telephone numbers. Requests for non-published and unlisted telephone numbers will be provided, unless the subscriber of a non-published or unlisted telephone number has affirmatively requested that its BNA not be disclosed.

BNA requests will be received via facsimile only. Unless the requested telephone number is non-published or unlisted, responses will be returned via facsimile to the customer within thirty (30) days of receipt of the initial request. In the event the requested telephone number is non-published or unlisted, pursuant to the FCC's December 7, 1994 BNA Order, the Company will send a letter via the United States Postal Service, to the end user informing him that they may prevent BNA disclosure. The Company must allow thirty (30) days for the unlisted and non-published subscribers to return their written non-disclosure authorization. In the event the subscriber does not return this non-disclosure within this time period, the BNA information will be released to the customer.

RATES & CHARGES FOR BNA SERVICE

For each order for BNA information received by the Company, a BNA order charge applies. In addition, a charge applies for each customer specific record provided.

- A. BNA Order Charge
- B. BNA charge per record

Issued: December 27, 2013

Issued by: KNOLOGY of Kentucky, Inc. d/b/a WOW! Internet, Cable and Phone
1241 O.G. Skinner Drive
West Point, Georgia 31833

<p>\$50.94 KENTUCKY PUBLIC SERVICE COMMISSION</p>
<p>\$0.03 R. DEROUEN EXECUTIVE DIRECTOR</p>
<p>TARIFF BRANCH Effective _____, 2013 <i>Brent Kirtley</i></p>
<p>12/30/2013 PURSUANT TO 807 KAR 5:011 SECTION 9 (1)</p>

INTRASTATE DOMESTIC ACCESS SERVICES

10. RESERVED FOR FUTURE USE

Issued: December 27, 2013

Issued by: KNOLOGY of Kentucky, Inc. d/b/a WOW! Internet, Cable and Phone
1241 O.G. Skinner Drive
West Point, Georgia 31833

KENTUCKY PUBLIC SERVICE COMMISSION
JEFF R. DEROUEN EXECUTIVE DIRECTOR
TARIFF BRANCH Effective <i>Brent Kirtley</i> , 2013
12/30/2013 PURSUANT TO 807 KAR 5:011 SECTION 9 (1)

INTRASTATE DOMESTIC ACCESS SERVICES

11. RESERVED FOR FUTURE USE

Issued: December 27, 2013

Issued by: KNOLOGY of Kentucky, Inc. d/b/a WOW! Internet, Cable and Phone
1241 O.G. Skinner Drive
West Point, Georgia 31833

KENTUCKY PUBLIC SERVICE COMMISSION
JEFF R. DEROUEN EXECUTIVE DIRECTOR
TARIFF BRANCH Effective <i>Brent Kirtley</i> , 2013
12/30/2013 PURSUANT TO 807 KAR 5:011 SECTION 9 (1)

INTRASTATE DOMESTIC ACCESS SERVICES

12. RESERVED FOR FUTURE USE

Issued: December 27, 2013

Issued by: KNOLOGY of Kentucky, Inc. d/b/a WOW! Internet, Cable and Phone
1241 O.G. Skinner Drive
West Point, Georgia 31833

KENTUCKY PUBLIC SERVICE COMMISSION
JEFF R. DEROUEN EXECUTIVE DIRECTOR
TARIFF BRANCH Effective <i>Brent Kirtley</i> , 2013
12/30/2013 PURSUANT TO 807 KAR 5:011 SECTION 9 (1)

INTRASTATE DOMESTIC ACCESS SERVICES

13. RESERVED FOR FUTURE USE

Issued: December 27, 2013

Issued by: KNOLOGY of Kentucky, Inc. d/b/a WOW! Internet, Cable and Phone
1241 O.G. Skinner Drive
West Point, Georgia 31833

KENTUCKY PUBLIC SERVICE COMMISSION
JEFF R. DEROUEN EXECUTIVE DIRECTOR
TARIFF BRANCH Effective <i>Brent Kirtley</i> , 2013
12/30/2013 PURSUANT TO 807 KAR 5:011 SECTION 9 (1)

INTRASTATE DOMESTIC ACCESS SERVICES

14. RESERVED FOR FUTURE USE

Issued: December 27, 2013

Issued by: KNOLOGY of Kentucky, Inc. d/b/a WOW! Internet, Cable and Phone
1241 O.G. Skinner Drive
West Point, Georgia 31833

KENTUCKY PUBLIC SERVICE COMMISSION
JEFF R. DEROUEN EXECUTIVE DIRECTOR
TARIFF BRANCH Effective <i>Brent Kirtley</i> , 2013
12/30/2013 PURSUANT TO 807 KAR 5:011 SECTION 9 (1)

INTRASTATE DOMESTIC ACCESS SERVICES

15. RESERVED FOR FUTURE USE

Issued: December 27, 2013

Issued by: KNOLOGY of Kentucky, Inc. d/b/a WOW! Internet, Cable and Phone
1241 O.G. Skinner Drive
West Point, Georgia 31833

KENTUCKY PUBLIC SERVICE COMMISSION
JEFF R. DEROUEN EXECUTIVE DIRECTOR
TARIFF BRANCH Effective <i>Brent Kirtley</i> , 2013
12/30/2013 PURSUANT TO 807 KAR 5:011 SECTION 9 (1)

INTRASTATE DOMESTIC ACCESS SERVICES

16. RATES AND CHARGES

16.1 Common Line Access Service

16.1.1	<u>Carrier Common Line Access Service</u>	<u>Rate</u>
	<u>Premium Access</u>	
-	Terminating Per Access Minute	\$0.00000
-	Originating Per Access Minute	\$0.00000

16.2 Switched Access Service

16.2.1	<u>Non-recurring Charges</u>	<u>Rate</u>
A.	<u>Local Transport - Installation</u> <u>Per Entrance Facility</u>	<u>First</u> <u>Additional</u>
-	Voice Grade Two Wire	\$308.95\$ 119.49
-	Voice Grade Four Wire	\$314.69\$ 125.19
-	High Capacity DS1	\$866.97\$ 486.83
-	High Capacity DS3	\$870.50\$ 427.88
B.	<u>FGD Conversion of</u> <u>Multifrequency Address</u> <u>Signaling to SS7 Signaling</u> <u>or SS7 Signaling to</u> <u>Multifrequency Address</u> <u>Signaling</u>	
-	Per 24 Trunks Converted or Fraction thereof on a Per Order Basis	\$ 260.00
C.	<u>Direct Trunked Transport</u> <u>Activated</u>	<u>Per Order</u>
	Per 24 Trunks Activated Or Fraction thereof, on A Per Order Basis	\$90.00
D.	<u>Local Transport -Installation</u> <u>Per Line or Trunk</u>	<u>First</u> <u>Additio</u> \$915.00 \$100.00

Issued: December 27, 2013

Issued by:KNOLOGY of Kentucky, Inc. d/b/a WOW! Internet, Cable and Phone
1241 O.G. Skinner Drive
West Point, Georgia 31833

KENTUCKY PUBLIC SERVICE COMMISSION
JEFF R. DEROUEN EXECUTIVE DIRECTOR
TARIFF BRANCH Effective _____, 2013 <i>Brent Kirtley</i>
12/30/2013 PURSUANT TO 807 KAR 5:011 SECTION 9 (1)

INTRASTATE DOMESTIC ACCESS SERVICES

16. RATES AND CHARGES (Cont'd)

16.2 Switched Access Service (Cont'd)

16.2.2 Local Transport

Premium Access

<u>A. Entrance Facility</u>	<u>Rate</u>	
Per Termination		
- Voice Grade Two Wire	\$ 25.00	
- Voice Grade Four Wire	\$ 45.24	
- High Capacity DS1	\$ 133.81	
- High Capacity DS3	\$ 2,100.00	
 <u>B. Direct Trunked Transport</u>		
- <u>Direct Trunked Facility</u>		
Per Mile		
- Voice Grade	\$ 1.90	
- DS0	\$ 3.95	
- High Capacity DS1	\$ 23.50	
- High Capacity DS3	\$ 175.00	
 <u>C. Direct Trunked Termination</u>		<u>Non-recurring Charge</u>
Per Termination		
- Voice Grade	\$ 23.30	\$ 79.85
- DS0	\$ 38.37	\$ 24.01
- High Capacity DS1	\$ 90.00	\$ 100.49
- High Capacity DS3	\$ 1,200.00	\$ 67.19
 <u>D. Multiplexing</u>		<u>Initial/Additional</u>
Per Arrangement		
- DS3 to DS1	\$ 970.00	\$ 145.45/ 584.80
- DS1 to Voice	\$ 0.00	\$ 0.00
 <u>E. Tandem Switched Transport</u>		
- <u>Tandem Switched Facility</u>	\$ 0.00003	
Per Access Minute and 1 Per Mile Of transport.		
 <u>F. Tandem Switched Termination</u>	\$ 0.000227	
Per Access Minute Per Termination		
 <u>G. Tandem Switching</u>		
Per Access Minute Per Tandem	\$ 0.000968	

Issued: December 27, 2013

Issued by: KNOLOGY of Kentucky, Inc. d/b/a WOW! Internet, Cable and Phone
1241 O.G. Skinner Drive
West Point, Georgia 31833

KENTUCKY
PUBLIC SERVICE COMMISSION

JEFF R. DEROUEN
EXECUTIVE DIRECTOR

TARIFF BRANCH

Effective _____, 2013
Brent Kirtley

12/30/2013

PURSUANT TO 807 KAR 5:011 SECTION 9 (1)

INTRASTATE DOMESTIC ACCESS SERVICES

16. RATES AND CHARGES (Cont'd)

16.2 Switched Access Service (Cont'd)

16.2.2 Local Transport (Cont'd)

	<u>Rate</u>	<u>Non-recurring Charge</u>
I. <u>Signaling Network Access Link</u>		
- Signaling Mileage Facility per mile	\$ 4.09	
- Signaling Mileage Termination per Termination	\$ 41.09	
- Signaling Entrance Facility Per Facility	\$ 65.60	
- Signaling Entrance Facility per Facility	\$ 177.00	
- STP Port per port	\$ 455.00	
J. <u>800 Series Data Base Access Service Queries</u>		
	<u>Rate</u>	
- Per Query Basic	\$ 0.00365	
- Vertical	\$ 0.00431	

16.2.3 End Office

A. <u>Local Switching</u>	\$ 0.004497
---------------------------	-------------

Issued: December 27, 2013

Issued by: KNOLOGY of Kentucky, Inc. d/b/a WOW! Internet, Cable and Phone
1241 O.G. Skinner Drive
West Point, Georgia 31833

KENTUCKY PUBLIC SERVICE COMMISSION
JEFF R. DEROUEN EXECUTIVE DIRECTOR
TARIFF BRANCH Effective _____, 2013 <i>Brent Kirtley</i>
12/30/2013 PURSUANT TO 807 KAR 5:011 SECTION 9 (1)

INTRASTATE DOMESTIC ACCESS SERVICES

16. RATES AND CHARGES (Cont'd)

16.2 Switched Access Service (Cont'd)

16.2.4 Operator Transfer Service

	<u>Rate</u>
Per Call Transferred	\$ 0.4588

16.3 Special Access Service

16.3.1 Voice Grade Service

	<u>Monthly Rate</u>	<u>Non-recurring Charge</u>
A. Channel Termination Per Termination **		
- Two-Wire	\$ 25.00	\$ 275.00
- Four-Wire	\$ 45.00	\$ 280.00
B. Channel Mileage **		
1. Channel Mileage Facility Per Mile 1- 8 miles	\$ 2.05	
2. Channel Mileage Termination Per Termination	\$ 32.00	\$ 105.00
C. Optional Features and Functions		
1. Bridging		
(a) <u>Voice Bridging</u> Per Port		
- Two-Wire	\$ 12.00	\$ 42.00
- Four-Wire	\$ 14.00	\$ 42.00
(b) <u>Data Bridging</u> Per Port		
- Two-Wire	\$ 20.00	\$ 45.00
- Four-Wire	\$ 20.00	\$ 45.00

** An additional Channel Termination Charge will apply when a spare channel is configured as a leg to the Customer designated premise. Additional Channel Mileage Charges will also apply if the premise is not located in the Customer designated premise serving wire center.

Issued: December 27, 2013

Issued by: KNOLOGY of Kentucky, Inc. d/b/a WOW! Internet, Cable and Phone
1241 O.G. Skinner Drive
West Point, Georgia 31833

KENTUCKY PUBLIC SERVICE COMMISSION

JEFF R. DEROUEN
EXECUTIVE DIRECTOR

TARIFF BRANCH

Effective _____, 2013

Brent Kirtley

12/30/2013

PURSUANT TO 807 KAR 5:011 SECTION 9 (1)

INTRASTATE DOMESTIC ACCESS SERVICES

16. RATES AND CHARGES (Cont'd)

16.3 Special Access Service (Cont'd)

16.3.1 Voice Grade Service (Cont'd)

C. Optional Features and Functions (Cont'd)

	<u>Monthly Rate</u>	<u>Non-recurring Charge</u>
2. Conditioning Per Termination		
- C Type	\$ 3.00	\$ 15.00
- D Type (Data Capability)	\$ 3.00	\$ 9.00
3. Improved Return Loss for Effective Two-Wire or Four-Wire Transmission		
- Two-Wire	\$ 20.00	\$ 7.00
- Four-Wire	\$ 20.00	\$ 6.00
4. Customer Specified Receive Level per two-wire termination	\$ 20.00	\$ 3.00
5. Signaling Capability Per Local Channel		
Loop	\$ 6.00	\$ 19.00
Single Frequency	\$ 7.00	\$ 27.00
E&M	\$ 10.00	\$ 29.00
Ground	\$ 6.00	\$ 12.00
Type C	\$ 3.00	\$ 18.00
Other	\$ 6.00	\$ 22.00
6. Improved Termination per Point of Termination	\$ 3.00	\$ 3.00

Issued: December 27, 2013

Issued by: KNOLOGY of Kentucky, Inc. d/b/a WOW! Internet, Cable and Phone
1241 O.G. Skinner Drive
West Point, Georgia 31833

KENTUCKY PUBLIC SERVICE COMMISSION
JEFF R. DEROUEN EXECUTIVE DIRECTOR
TARIFF BRANCH Effective _____, 2013 <i>Brent Kirtley</i>
12/30/2013 PURSUANT TO 807 KAR 5:011 SECTION 9 (1)

INTRASTATE DOMESTIC ACCESS SERVICES

16. RATES AND CHARGES (Cont'd)

16.3 Special Access Service (Cont'd)

16.3.2 Digital Data Service

A. Channel Termination **
Per Termination

	<u>Monthly Rate</u>	<u>Non-recurring Charge</u>
- 2.4 kbps	\$ 50.00	\$ 530.00
- 4.8 kbps	\$ 50.00	\$ 530.00
- 9.6 kbps	\$ 50.00	\$ 530.00
- 19.2 kbps	\$ 50.00	\$ 530.00
- 56.0 kbps	\$ 70.00	\$ 575.00
- 64.0 kbps	\$ 70.00	\$ 615.00

B. Channel Mileage **

1. Channel Mileage Facility
Per Mile

	<u>Monthly Rate</u> <u>1-8 miles</u>
- 2.4 kbps	\$ 2.05
- 4.8 kbps	\$ 2.05
- 9.6 kbps	\$ 2.05
-19.2 kbps	\$ 2.05
-56.0 kbps	\$ 4.10
-64.0 kbps	\$ 4.10

2. Channel Mileage Termination
Per Termination

	<u>Monthly Rate</u>	<u>Non-recurring Charge</u>
- 2.4 kbps	\$ 20.00	\$ 64.00
- 4.8 kbps	\$ 20.00	\$ 64.00
- 9.6 kbps	\$ 20.00	\$ 64.00
-19.2 kbps	\$ 20.00	\$ 64.00
-56.0 kbps	\$ 40.00	\$ 64.00
-64.0 kbps	\$ 40.00	\$ 64.00

** An additional Channel Termination Charge will apply when a spare channel is configured as a leg to the Customer designated premise. Additional Channel Mileage Charges will also apply when the service is not located in the Customer designated premise serving wire center.

Issued: December 27, 2013

Issued by: KNOLOGY of Kentucky, Inc. d/b/a WOW! Internet, Cable and Phone
1241 O.G. Skinner Drive
West Point, Georgia 31833

**KENTUCKY
PUBLIC SERVICE COMMISSION**

**JEFF R. DEROUEN
EXECUTIVE DIRECTOR**

TARIFF BRANCH
Effective _____, 2013
Brent Kirtley

12/30/2013
PURSUANT TO 807 KAR 5:011 SECTION 9 (1)

INTRASTATE DOMESTIC ACCESS SERVICES

16. RATES AND CHARGES (Cont'd)

16.3 Special Access Service (Cont'd)

16.3.2 Digital Data Service (Cont'd)

	<u>Monthly Rate</u>	<u>Non- recurring Charge</u>
C. Optional Features and Functions		
1. Bridging Per Port	\$ 25.00	\$ 13.00

Issued: December 27, 2013

Issued by: KNOLOGY of Kentucky, Inc. d/b/a WOW! Internet, Cable and Phone
1241 O.G. Skinner Drive
West Point, Georgia 31833

KENTUCKY PUBLIC SERVICE COMMISSION
JEFF R. DEROUEN EXECUTIVE DIRECTOR
TARIFF BRANCH Effective _____, 2013 <i>Brent Kirtley</i>
12/30/2013 PURSUANT TO 807 KAR 5:011 SECTION 9 (1)

INTRASTATE DOMESTIC ACCESS SERVICES

16. RATES AND CHARGES (Cont'd)

16.3. Special Access Service (Cont'd)

16.3.3 High Capacity Service

		<u>Monthly Rate</u>	<u>Non-recurring Charge</u>
A.	Channel Termination Per Termination		
-	DS1 1.544 Mbps	\$ 117.00	\$ 665.00
-	DS3 44.736 Mbps	\$ ICB	\$ ICB
B.	Channel Mileage	<u>Monthly Rate</u>	
1.	Channel Mileage Facility Per Mile		
-	1.544 Mbps	\$ 28.00	
-	44.736 Mbps	\$ ICB	
2.	Channel Mileage Termination Per Termination		
-	1.544 Mbps	\$ 90.00	
-	44.736 Mbps	\$ ICB	
C.	Optional Features and Functions	<u>Rate</u>	<u>Non-recurring Charge</u>
1.	Multiplexing, per arrangement		
	DS3 to DS1	\$ ICB	
	DS1 to Voice	\$ 210.00	\$ 140.00
2.	Transfer Arrangement ** Per four port arrangement including control channel termination	\$ 175.00	\$ 15.00

** An additional Local Channel charge will apply whenever the spare line is provided as a leg to the Customer premise.

Issued: December 27, 2013

Issued by: KNOLOGY of Kentucky, Inc. d/b/a WOW! Internet, Cable and Phone
1241 O.G. Skinner Drive
West Point, Georgia 31833

**KENTUCKY
PUBLIC SERVICE COMMISSION**

**JEFF R. DEROUEN
EXECUTIVE DIRECTOR**

TARIFF BRANCH
Effective _____, 2013
Brent Kirtley

12/30/2013
PURSUANT TO 807 KAR 5:011 SECTION 9 (1)

INTRASTATE DOMESTIC ACCESS SERVICES

16. RATES AND CHARGES (Cont'd)

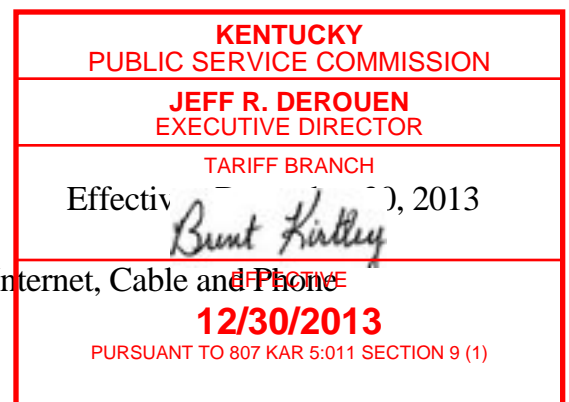
16.4 Other Services

16.4.1 Access Ordering

	<u>Charge</u>
A. <u>Access Order Charge</u> Per Order	\$ 82.00
B. <u>Service Date Change Charge</u> A Service Date Change Charge will apply, on a per order per occurrence basis, for each service date changed. The Access Order Charge as specified in 17.4.1.A. preceding does not apply. The applicable charge is: Service Date Change Charge, per order	\$ 31.60
C. <u>Design Change Charge</u> The Design Change Charge will apply on a per order per occurrence basis, for each order requiring design change. The applicable charge is: Design Change Charge, per order	\$ 39.93
D. <u>Miscellaneous Service Order Charge</u> Per Occurrence	\$ 35.00

Issued: December 27, 2013

Issued by: KNOLOGY of Kentucky, Inc. d/b/a WOW! Internet, Cable and Phone
1241 O.G. Skinner Drive
West Point, Georgia 31833



INTRASTATE DOMESTIC ACCESS SERVICES

16. RATES AND CHARGES (Cont'd)

16.4 Other Services (Cont'd)

16.4.2 Additional Engineering

<u>Additional Engineering Periods</u>	<u>First Half Hour or Fraction Thereof</u>	<u>Each Additional Half Hour or Fraction Thereof</u>
A. Basic Time per engineer normally scheduled working hours	\$ 66.00	\$ 39.79
B. Overtime per engineer outside of normally scheduled working hours	\$ 73.41	\$ 47.20
C. Premium Time outside of scheduled work day, per engineer	ICB	

These labor charges are applicable for the following:

Additional Cooperative Acceptance testing
Additional Manual Testing
Maintenance of Service

Issued: December 27, 2013

Issued by: KNOLOGY of Kentucky, Inc. d/b/a WOW! Internet, Cable and Phone
1241 O.G. Skinner Drive
West Point, Georgia 31833

KENTUCKY PUBLIC SERVICE COMMISSION
JEFF R. DEROUEN EXECUTIVE DIRECTOR
TARIFF BRANCH Effective _____, 2013 <i>Brent Kirtley</i>
12/30/2013 PURSUANT TO 807 KAR 5:011 SECTION 9 (1)

INTRASTATE DOMESTIC ACCESS SERVICES

16. RATES AND CHARGES (Cont'd)

16.4 Other Services (Cont'd)

16.4.3 Additional Labor

<u>Additional Labor Periods</u>	<u>First Half Hour or Fraction Thereof</u>	<u>Each Additional Half Hour or Fraction Thereof</u>
A. <u>Installation or Repair</u> *		
- Overtime, outside of normally scheduled working hours on a scheduled work day, per technician	\$ 29.31	\$ 3.10
- Premium Time, outside of scheduled work day, per technician	\$ 32.42	\$ 6.21
B. <u>Stand by</u> *		
- Basic time, normally scheduled working hours, per technician	\$ -	\$ 17.91
- Overtime, outside of normally scheduled working hours on a scheduled work day, per technician	\$ -	\$ 21.01
- Premium Time, outside of scheduled work day, per technician	\$ -	\$ 24.12

* A call-out of a Company employee at a time not consecutive with the employee's scheduled work period is subject to a minimum charge of four (4) hours.

Issued: December 27, 2013

Issued by: KNOLOGY of Kentucky, Inc. d/b/a WOW! Internet, Cable and Phone
1241 O.G. Skinner Drive
West Point, Georgia 31833

**KENTUCKY
PUBLIC SERVICE COMMISSION**

**JEFF R. DEROUEN
EXECUTIVE DIRECTOR**

TARIFF BRANCH
Effective _____, 2013
Brent Kirtley

12/30/2013
PURSUANT TO 807 KAR 5:011 SECTION 9 (1)

INTRASTATE DOMESTIC ACCESS SERVICES

16. RATES AND CHARGES (Cont'd)

16.4 Other Services (Cont'd)

16.4.3 Additional Labor (Cont'd)

<u>Additional Labor Periods *</u>	<u>First Half Hour or Fraction Thereof</u>	<u>Each Additional Half Hour or Fraction Thereof</u>
C. Testing and Maintenance with other Telephone Companies, or Other Labor		
- Basic Time per technician normally scheduled working hours	\$ 44.12	\$ 17.91
- Overtime per technician outside of normally scheduled working hours on a scheduled work day	\$ 47.22	\$ 21.01
- Premium Time per technician outside of scheduled work day	\$ 50.33	\$ 24.12

* A call-out of a Company employee at a time not consecutive with the employee's scheduled work period is subject to a minimum charge of four (4) hours.

Issued: December 27, 2013

Issued by: KNOLOGY of Kentucky, Inc. d/b/a WOW! Internet, Cable and Phone
1241 O.G. Skinner Drive
West Point, Georgia 31833

KENTUCKY
PUBLIC SERVICE COMMISSION

JEFF R. DEROUEN
EXECUTIVE DIRECTOR

TARIFF BRANCH
Effective _____, 2013
Brent Kirtley

12/30/2013
PURSUANT TO 807 KAR 5:011 SECTION 9 (1)

INTRASTATE DOMESTIC ACCESS SERVICES

16. RATES AND CHARGES (Cont'd)

16.4 Other Services (Cont'd)

16.4.4 Miscellaneous Services

A. Additional Automatic Testing - Switched Access

<u>To First Point of Switching</u>	<u>Rate</u>
Additional Per Test Per Path	\$ 0.21

B. Additional Cooperative Acceptance Testing - Special Access *

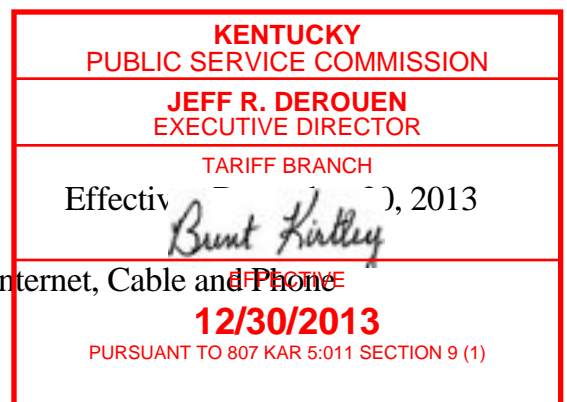
See "Rates for Additional Labor" as set forth in 16.4.3.C. preceding.

C. Telecommunications Service Priority

	<u>Non-recurring Charge</u>	<u>Monthly Rate</u>
Per circuit, Priority Installation	\$ 83.00	
Per circuit, Priority Restoration	\$ 65.00	
Priority Restoration Admin./Maintenance		\$ 3.75

Issued: December 27, 2013

Issued by: KNOLOGY of Kentucky, Inc. d/b/a WOW! Internet, Cable and Phone
1241 O.G. Skinner Drive
West Point, Georgia 31833



INTRASTATE DOMESTIC ACCESS SERVICES

16. RATES AND CHARGES (Cont'd)

16.4	<u>Other Services</u> (Cont'd)	<u>Rate</u>
16.4.5	<u>Special Facilities Routing of Access Services</u>	
A.	Diversity	ICB
B.	Avoidance	ICB
C.	Diversity and Avoidance Combined	ICB

Issued: December 27, 2013

Issued by: KNOLOGY of Kentucky, Inc. d/b/a WOW! Internet, Cable and Phone
1241 O.G. Skinner Drive
West Point, Georgia 31833

KENTUCKY PUBLIC SERVICE COMMISSION
JEFF R. DEROUEN EXECUTIVE DIRECTOR
TARIFF BRANCH Effective <i>Brent Kirtley</i> , 2013
12/30/2013 PURSUANT TO 807 KAR 5:011 SECTION 9 (1)

INTRASTATE DOMESTIC ACCESS SERVICES

16. RATES AND CHARGES (Cont'd)

16.4	<u>Other Services</u> (Cont'd)	<u>Rate</u>
16.4.6	<u>Specialized Service or Arrangements</u>	ICB

Specialized Service or Arrangements are provided on an individual case basis.

Issued: December 27, 2013

Issued by: KNOLOGY of Kentucky, Inc. d/b/a WOW! Internet, Cable and Phone
1241 O.G. Skinner Drive
West Point, Georgia 31833

KENTUCKY PUBLIC SERVICE COMMISSION
JEFF R. DEROUEN EXECUTIVE DIRECTOR
TARIFF BRANCH Effective <i>Brent Kirtley</i> , 2013
12/30/2013 PURSUANT TO 807 KAR 5:011 SECTION 9 (1)